

PassTest

Bessere Qualität , bessere Dienstleistungen!



Q&A

<http://www.passtest.de>

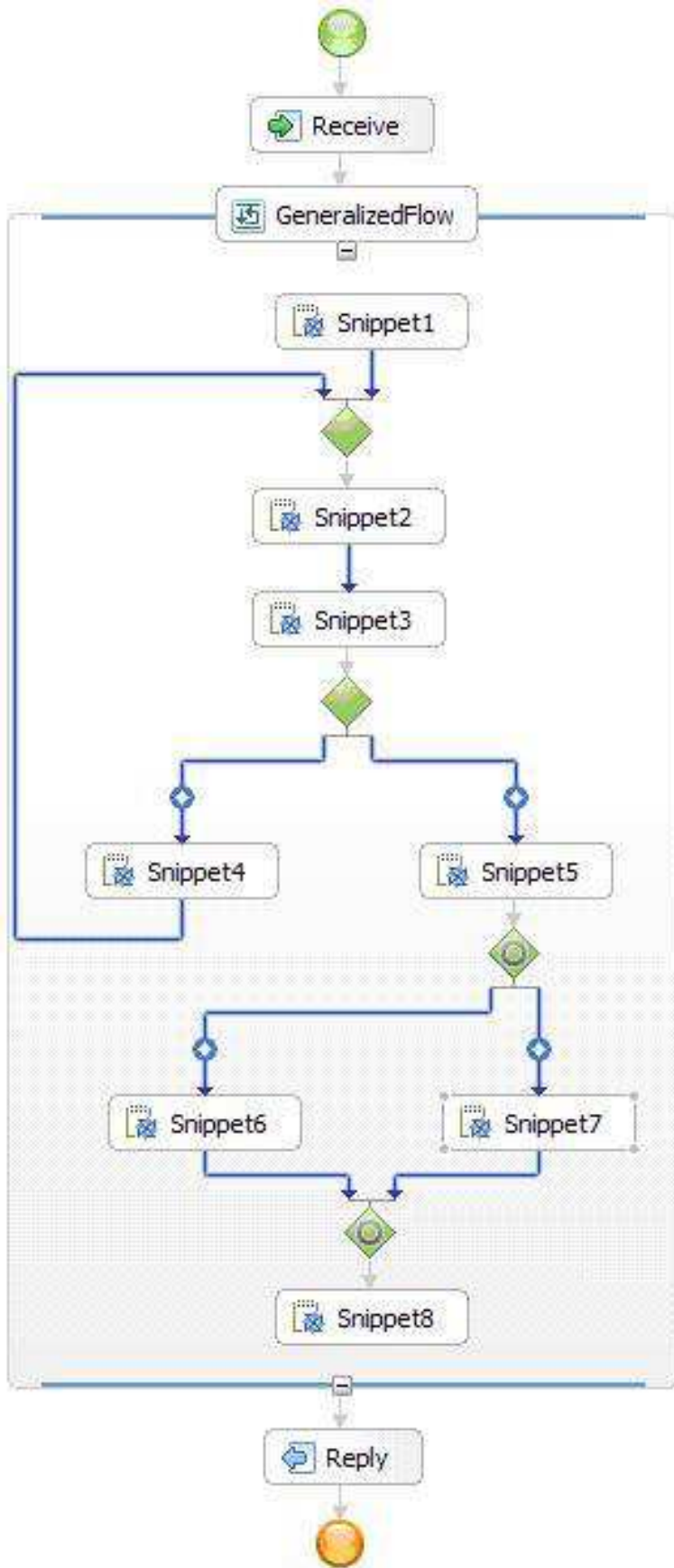
Einjährige kostenlose Aktualisierung

Exam: **C2180-379**

Title : IBM WebShpere Integration
Developer V6.2,Solution
Developme

Version : DEMO

1. Refer to the Exhibit.



Which statement correctly describes the configuration?

- A. It is not possible for Snippet4 and Snippet 6 to run in parallel.
- B. Snippet6 and Snippet8 can run in parallel.
- C. The business process contains a deadlock.
- D. The process will not compile if it is configured to be short running.

Answer: A

2. An integration developer has been given the task of training a group of new developers who have no experience with WebSphere Integration Developer.

Which statements are most likely to be included in the training presentation introducing human task and their usage in WebSphere Integration Developer?

- A. Stand-alone tasks are invoked as a service and can invoke other services.
- B. Stand-alone tasks do not have direct access to process-related information.
- C. Inline human tasks are SCA component activity.
- D. Inline human tasks can not be used to create human task for process administration.
- E. Inline tasks can not be used to apply permissions to BPEL activities like invoke, receive etc.

Answer: AB

3. A solution developer is planning the design of a web based music catalog that allows users to listen to music via an online streaming feature, or to purchase individual selections for download.

What approach would the solution developer take when organizing the work in WebSphere Integration Developer in order to maximize the reuse potential of the solution?

- A. Place the streaming logic in one module and the download logic in a separate module, then place the common interface files in a library.
- B. Place the streaming logic and the download logic in the same integration solution, then place the interface files in separate libraries.
- C. Use two libraries to keep the interfaces of both services separate, then place the application logic of both services into a single module.
- D. Use a single integration solution to store and deploy the entire application, then separate the backend logic into separate modules.

Answer: A

4. Which activities require usage of a long-running process?

- A. Wait
- B. Receive Choice
- C. Collaboration Scope
- D. Asynchronous invocation
- E. More than one Receive or Receive Choice activity.

Answer: AE

5. An integration solution includes a business process which needs to invoke a business service. This service is going to be replaced in a certain known date and time, when a new third party provider will take ownership of it, honoring a three year contract which starts right at that date. Old and new services do not differ in terms of their interface.

What is the best way to implement the business process binding to the services?

- A. Configure and invoke a Selector for switching services at the specific date and time.
- B. Configure and invoke Selector for switching services at the specific date and time, using a mediation for request routing.
- C. Develop and invoke a mediation which routes to the old or new service depending on the request time.
- D. Develop and invoke a mediation which routes the request to a Selector, which must be configured for switching services at the specific date and time.

Answer: A

6. An integration solution includes a business process which needs to poll an FTP server for detecting a specific CSV file creation. As the file gets created, it must be parsed and its data must be stored in a Business Object. This Business Object is then processed in the Business Process according to the process logic.

How would the integration developer most effectively implement this?

- A. Use the FTP Adapter in a mediation and XSLT primitives to convert the CSV file to a Business Object.
- B. Develop a Web service wrapping the FTP protocol and invoke it through a mediation which uses XSLT

primitives to convert the CSV file to a Business Object.

C. Use the FTP Adapter in a mediation and Business Object Map primitives to convert the CSV file to a Business Object.

D. Use the FTP Adapter combined with a data handler responsible for transforming from the file content to the Business Object.

Answer: D

7. Refer to the Exhibit.



An integration developer has designed and implemented business objects like the ones in the Exhibit.

Assuming the integration developer needs to write a service as a Java component which needs to read the first ordered item warehouse, which one of the following code fragments is appropriate (assume order is a DataObject which actually stores the order)?

- A. `order.get("orderedItems[0]/warehouseId")`
- B. `((DataObject)order.get ("orderedItems"))[0].getInt("warehouseId")`
- C. `((DataObject[])order.get("orderedItems"))[0].getInt("warehouseId")`
- D. `((DataObject)order.getList("orderedItems").get(0)).getInt("warehouseId")`

Answer: D

8. An integration developer is implementing a solution and needs to create a Business Object "Customer" using Java snippets.

What is the correct way to accomplish this task?

- A. Use `com.ibm.websphere.sca.Service` to create a Customer `BODataObject`, which is a Business Object, in the appropriate namespace.
- B. Use `com.ibm.websphere.sca.Service` to get `BOFactory` and use `BOFactory` to create the Customer Business Object in the appropriate namespace.
- C. Use `com.ibm.websphere.sca.ServiceManager` to create a Customer `BODataObject`, which is a Business Object, in the appropriate namespace.
- D. Use `com.ibm.websphere.sca.ServiceManager` to get `BOFactory` and use `BOFactory` to create the Customer Business Object in the appropriate namespace.

Answer: D

9. An integration developer is developing a solution which must make use of an existing Web service. The Web service provider sent a complete WSDL (including XSDs, port types, bindings) for allowing the solution to consume it.

How can the developer create the corresponding Interface and Web Service Port on WebSphere Integration Developer?

- A. Import the WSDL (Import wizard, Web Services ? Web Service), which automatically will create Web service Port and Interface according to the WSDL
- B. Import the WSDL (Import wizard, Web Services ? Web Service) in order to get the correct Web Service Port, then manually create the Interface according to the provider Web service characteristics
- C. Import the WSDL file (Import wizard, General ? File System), open the WSDL with the WSDL editor and use the information in it to create Web Service Port and Interface

D. Import the WSDL (Import wizard, Business Integration ? WSDL/Interface), then manually create Web Service Port

E. Import the WSDL (Import wizard, Business Integration ? WSDL/Interface), which automatically will create Web Service Port and Interface according to the WSDL

Answer: E

10. A BPEL process is in an SCA module which as been configured to depend on a Java project. The Java project contains a JAR file and that JAR file is set up as a library in the Java class path properties of the Java project.

Which one of the following statements is true?

A. Assets in the JAR will be shared by-copy.

B. Assets in the JAR will be shared by-reference.

C. Deep nesting of the JAR file creates an unsupported circular reference.

D. References to classes in the JAR file within a Java snippet will result in compilation errors.

Answer: A