

PassTest

Bessere Qualität , bessere Dienstleistungen!



Q&A

<http://www.passtest.de>

Einjährige kostenlose Aktualisierung

Exam : **642-652**

Title : Wide Area Application
Services for Field Engineers

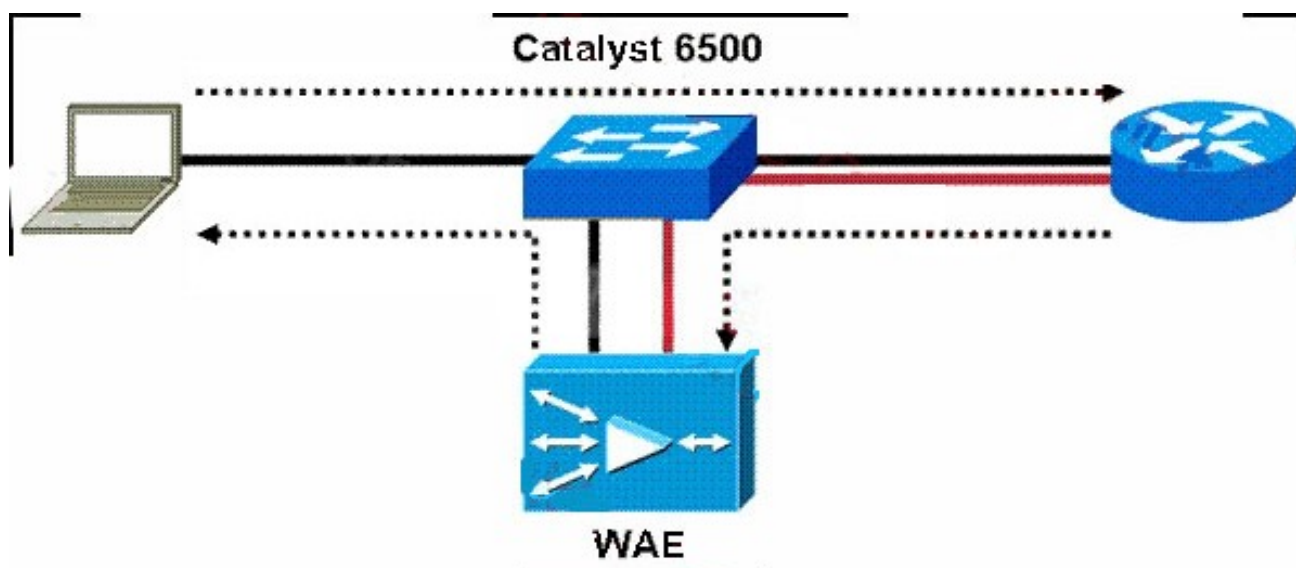
Version : Demo

1. After configuring a Cisco WAAS deployment using WCCPV2, you find that you can successfully ping a data center server from a workstation in the branch office. However, when you attempt to start one of the optimized applications, the application cannot communicate with the server. What is the most likely cause?

- A. There is insufficient disk space on either the edge or core WAE.
- B. You configured half-duplex mode on the WAE interfaces.
- C. You configured autonegotiate duplex mode on the WAE interfaces.
- D. You deployed the WAE on the same subnet as the users or servers.

Answer: D

2. Refer to the exhibit. Your customer plans to deploy the edge WAE appliances in an off-path, two-arm configuration. The WAE appliances are connected to Cisco Catalyst 6500 Series Switches and use WCCPV2 for traffic interception. The customer wants to minimize the latency added by interception. The customer also wants to know if Layer 2 redirection, rather than GRE tunnels, will improve performance. What should you tell your customer?



- A. Layer 2 redirection can be used only in in-path configurations.
- B. Layer 2 redirection can be used only in one-arm configurations.
- C. Layer 2 redirection can be used in the customer configuration.
- D. GRE tunnels provide better performance than Layer 2 redirection.

Answer: C

3. When implementing Windows authentication for WAE management, what is the maximum allowable time skew between each WAE and the Windows domain controller?

- A. 1 second
- B. 5 seconds
- C. 120 seconds
- D. 300 seconds

Answer: D

4. Your customer plans to implement Cisco WAAS using four WAE appliances in a load-balanced

configuration. Which feature must be supported on the switches to which the WAE appliances are attached?

- A. redirect exclusion
- B. Layer 2 redirection
- C. WCCPv2
- D. WCCPv2 or PBR

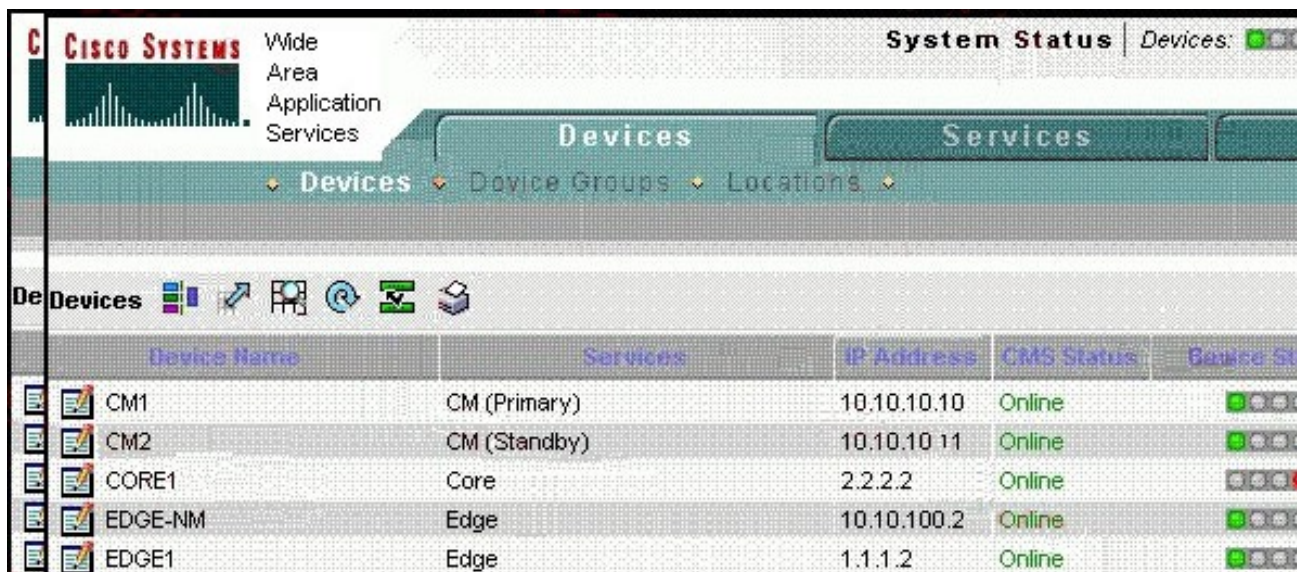
Answer: C

5. Your customer has deployed Cisco WAAS using ACE for traffic interception. The customer reports that traffic is not being optimized. Which command would you use to troubleshoot network interception?

- A. WAE-CORE# show wccp routers
- B. WAE-CORE# show ip access-lists
- C. ACE/Admin# show wccp routers
- D. ACE/Admin# show rserver detail
- E. router# show wccp services

Answer: D

6. Refer to the exhibit. What are two possible reasons the CORE1 WAE might be displayed as "Offline"? (Choose two.)



- A. The WAE is powered off.
- B. The HTTPS service is disabled.
- C. The Central Manager service is disabled.
- D. The WAE is configured in the same VLAN as the server nodes.

Answer: AC

7. Your customer reports that traffic has never been received by the remote device after deploying Cisco WAAS using WCCPv2 in an off-path configuration. Which two parameters should you verify? (Choose two.)

- A. IP SLAs
- B. WAE subnet

- C. router IP address
- D. routing configuration
- E. service group redirection

Answer: BE

8. Refer to the exhibit. This partial listing shows output from the show tfo connection summary command. Given this output, which statement is correct?

```
Local-IP:Port      Remote-IP:Port  ConId  PeerId          Policy
10.10.13.100:3826  10.10.10.100:80  34755  00:11:25:aa:c1:e8  L,F,L,L
```

- A. The local WAE policy was configured for LZ compression only; the remote WAE policy was configured for full optimization.
- B. The local WAE policy was configured for LZ compression and TFO optimization; the remote WAE policy was configured for LZ compression only.
- C. Both the local and remote WAE policies were configured for LZ compression only.
- D. Both the local and remote WAE policies were configured for LZ compression and TFO optimization, but only LZ compression was applied.

Answer: A

9. You have configured a Central Manager WAE cluster for your customer. After a technician accidentally unplugs the power cord from the primary Central Manager WAE, the network administrator calls you to complain that the standby Central Manager WAE did not automatically assume the primary role. What should you tell this administrator?

- A. You must manually initiate failover and fallback processes on the WAE.
- B. You should verify that the datafeed.pollrate setting is configured properly.
- C. You must manually copy the Central Manager database to the standby Central Manager WAE.
- D. You should make sure the two Central Manager WAE appliances are on the same subnet.

Answer: A

10. When must WCCPv2 redirect exclusion be configured on the routers?

- A. when redirect in is used on any interface
- B. when redirect in is used on the LAN interface only
- C. when redirect in is used on the WAN interface only
- D. when redirect out is used on any interface
- E. when redirect out is used on the LAN interface only
- F. when redirect out is used on the WAN interface only

Answer: D