

PassTest

Bessere Qualität , bessere Dienstleistungen!



Q&A

<http://www.passtest.de>

Einjährige kostenlose Aktualisierung

Exam : **4A0-110**

Title : Alcatel-Lucent Advanced
Troubleshooting

Version : DEMO

1. Two routers are physically connected to each other over Ethernet port 1/1/1. Review the configuration information shown below. What state should the OSPF neighbor be in?

Node 1

```
config> port 1/1/1
  ethernet
    mtu 1514
  exit
  no shutdown
router interface toNode2
  address 10.1.5.1/24
  port 1/1/1
router ospf
  area 0.0.0.0
    interface "toNode2"
      mtu 1500
```

Node 2

```
config> port 1/1/1
  no shutdown
router interface toNode1
  address 10.1.5.2/24
  port 1/1/1
router ospf
  area 0.0.0.0
    interface "toNode1"
      mtu 1500
```

- A. INIT
- B. EXCHANGE
- C. EXSTART
- D. FULL
- E. No OSPF neighbor

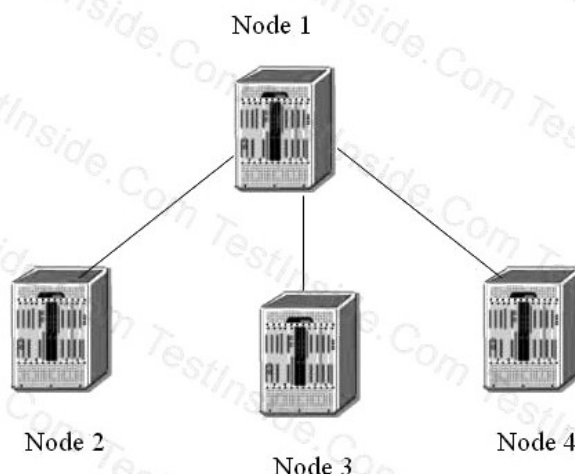
Answer: E

2. Which of the following debug statements can be used to troubleshoot if the OSPF adjacency is staying at xstart state? Select two answers.

- A. debug router ospf rtm
- B. debug router ospf packet dbdescr
- C. debug router ospf neighbor
- D. debug router ospf packet hello
- E. debug router ospf spf

Answer: BC

3. Based on the following configuration, which of the following statements are true? Choose all that apply.



```

Node-1
config>router>ospf#
  area 0.0.0.0
    interface "to-Node-2"
      metric 50
      authentication-key "DoGpEhE4333mNp52Iug6282" hash2
    interface "to-Node-3"
      metric 50
  area 0.0.0.1
    nssa
      originate-default-route
    interface "to-Node-4"
      metric 50
  
```

```

Node-2
config>router>ospf#
  area 0.0.0.0
    interface "to-Node-1"
      authentication-key "Sb77iS4bPCeH2Arm5iaFuHAXNbn1Ag82" hash2
  
```

```

Node-3
config>router>ospf#
  area 0.0.0.0
    interface "to-Node-1"
      hello-interval 15
  
```

```

Node-4
config>router>ospf#
  area 0.0.0.1
    interface "to-Node-1"
      metric 50
  
```

- A. No OPSF adjacency found on Node 1
- B. Full OSPF adjacency between Node-1 and Node-2
- C. Full OSPF adjacency between Node-1 and Node-3
- D. Full OSPF adjacency between Node-1 and Node-4
- E. OSPF is enabled on Node 1

Answer: BE

4. Two routers are physically connected to each other over Ethernet port 1/1/1. Review the configuration information below. What state should the OSPF neighbor be in?

Node 1

```
config> port 1/1/1
  ethernet
  mtu 1514
  exit
  no shutdown
router interface toNode2
  address 10.1.5.1/24
  port 1/1/1
router ospf
  area 0.0.0.0
  interface "toNode2"
  mtu 1500
```

Node 2

```
config> port 1/1/1
  no shutdown
router interface toNode1
  address 10.1.5.2/24
  port 1/1/1
router ospf
  area 0.0.0.0
  interface "toNode1"
  mtu 1500
```

- A. INIT
- B. EXCHANGE
- C. EXSTART
- D. FULL
- E. No OSPF neighbor

Answer: D

5. Two routers are physically connected running ISIS. ISIS L2 adjacency is up and running but L1 adjacency is not up. Review the configuration information shown below:

Which of the following statement best describe the cause of the problem? Select one answer only.

Pod-1

```

config>router>
  isis
  interface "toPod2"
  exit

# show router isis interface detail
=====
ISIS Interfaces
=====
-----
Interface      : toPod2                      Level Capability: L1L2
Oper State     : Up                        Admin State      : Up
Auth Type      : None
Circuit Id     : 2                          Retransmit Int. : 5
Type           : Broadcast                  LSP Pacing Int. : 100
Mesh Group     : Inactive                   CSNP Int.       : 10
Bfd Enabled    : No

Level          : 1                          Adjacencies     : 0
Desg. IS       : Pod1
Auth Type      : None                        Metric          : 10
Hello Timer    : 9                          Hello Mult.     : 3
Priority       : 64                          Passive         : No

Level          : 2                          Adjacencies     : 1
Desg. IS       : Pod1
Auth Type      : None                        Metric          : 10
Hello Timer    : 9                          Hello Mult.     : 3
Priority       : 64                          Passive         : No
  
```

Pod-2

```

config>router>
  isis
  interface "toPod1"
  exit

# show router isis interface detail
=====
ISIS Interfaces
=====
-----
Interface      : toPod1                      Level Capability: L1L2
Oper State     : Up                        Admin State      : Up
Auth Type      : None
Circuit Id     : 3                          Retransmit Int. : 5
Type           : Broadcast                  LSP Pacing Int. : 100
Mesh Group     : Inactive                   CSNP Int.       : 10
Bfd Enabled    : No

Level          : 1                          Adjacencies     : 0
Desg. IS       : Pod2
Auth Type      : None                        Metric          : 10
Hello Timer    : 9                          Hello Mult.     : 3
Priority       : 64                          Passive         : No

Level          : 2                          Adjacencies     : 1
Desg. IS       : Pod1
Auth Type      : None                        Metric          : 10
Hello Timer    : 9                          Hello Mult.     : 3
Priority       : 64                          Passive         : No
  
```

- A. The ISIS interface level is not configured on both routers
- B. The ISIS interface type should be configured as point-to-point interfaces
- C. ISIS System IDs are not configured on both routers
- D. ISIS Area addresses are not configured on both routers
- E. ISIS level capacity are not configured on both routers

Answer: D