

PassTest

Bessere Qualität , bessere Dienstleistungen!



Q&A

<http://www.passtest.de>

Einjährige kostenlose Aktualisierung

Exam : **300-620**

Title : Implementing Cisco
Application Centric
Infrastructure (DCACI)

Version : DEMO

1. An engineer configures a Cisco ACI Multi-Pod for disaster recovery.

Which action should be taken for the new nodes to be discoverable by the existing Cisco APICs?

- A. Configure IGMPv3 on the interfaces of IPN routers that face the Cisco ACI spine.
- B. Enable subinterfaces with dot1q tagging on all links between the IPN routers.
- C. Enable DHCP relay on all links that are connected to Cisco ACI spines on IPN devices.
- D. Configure BGP as the underlay protocol in IPN.

Answer: A

2. In-band is currently configured and used to manage the Cisco ACI fabric. The requirement is for leaf and spine switches to use out-of-band management for NTP protocol.

Which action accomplishes this goal?

- A. Select Out-of-Band as Management EPG in the default DateTimePolicy.
- B. Create an Override Policy with NTP Out-of-Band for leaf and spine switches.
- C. Change the interface used for APIC external connectivity to ooband.
- D. Add a new filter to the utilized Out-of-Band-Contract to allow NTP protocol.

Answer: A

Explanation:

<https://www.cisco.com/c/en/us/support/docs/cloud-systems-management/application-policy-infrastructure-controller-apic/200128-Configuring-NTP-in-ACI-Fabric-Solution.html>

3. Which attribute should be configured for each user to enable RADIUS for external authentication in Cisco ACI?

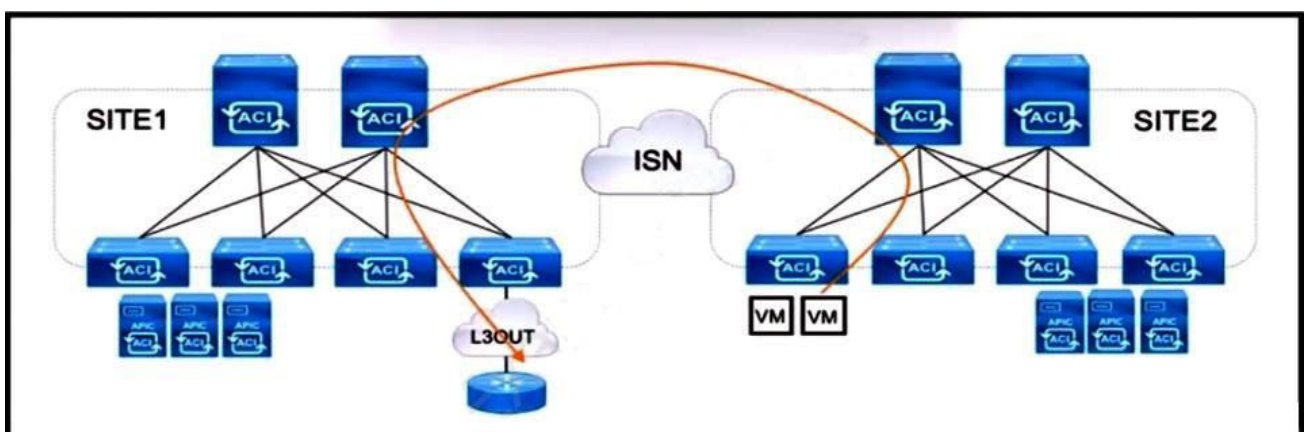
- A. cisco-security domain
- B. cisco-auth-features
- C. cisco-aci-role
- D. cisco-av-pair

Answer: D

Explanation:

Reference: https://www.cisco.com/c/en/us/td/docs/switches/datacenter/aci/apic/sw/2-x/Security_config/b_Cisco_APIC_Security_Configuration_Guide/b_Cisco_APIC_Security_Guide_chapter_01011.html

4. Refer to the exhibit.



An engineer is configuring a production Multi-Site solution to provide connectivity from EPGs from a specific site to networks reachable through a remote site L3OUT. All required schema and template objects are already defined.

Which additional configuration must be implemented in the Multi-Site Orchestrator to support the cross-site connectivity?

- A. Configure a routable TEP pool for SITE1.
- B. Enable CloudSec for intersite traffic encryption.
- C. Add a new stretched external EPG to the existing L3OUT.
- D. Implement a policy-based redirect using a service graph.

Answer: C

Explanation:

In order to provide connectivity from EPGs from a specific site to networks reachable through a remote site L3OUT, a new stretched external EPG must be added to the existing L3OUT.

5. An engineer must limit management access to the Cisco ACI fabric that originates from a single subnet where the NOC operates. Access should be limited to SSH and HTTPS only.

Where should the policy be configured on the Cisco APIC to meet the requirements?

- A. policy in the management tenant
- B. policy on the management VLAN
- C. ACL on the management interface of the APIC
- D. ACL on the console interface

Answer: A

Explanation:

<https://www.cisco.com/c/en/us/td/docs/switches/datacenter/aci/apic/sw/1->

[x/Operating_ACI/guide/b_Cisco_Operating_ACI/b_Cisco_Operating_ACI_chapter_0111.html](#)

3. Mgmt—The management tenant provides convenient means to configure access policies for fabric nodes. While fabric nodes are accessible and configurable through the APIC, they can also be accessed directly using in-band and out-of-band connections. **In-band and out-of-band policies are configured under the mgmt tenant:**

- [In-Band Management Access](#)
- [Out-of-Band Management Access](#)