

PassTest

Bessere Qualität , bessere Dienstleistungen!



Q&A

<http://www.passtest.de>

Einjährige kostenlose Aktualisierung

Exam : **070-685**

Title : Pro: Windows 7, Enterprise
Desktop Support Technician

Version : Demo

1. Topic 1, Consolidated Messenger

Scenario:

You are an enterprise desktop support technician for Consolidated Messenger.

Network Configuration

The company has three offices named Office1, Office2, and Office3. The offices connect to each other over the Internet by using VPN connections. Each office has an 802.11g wireless access point. All wireless access points are configured to use Radius01 for authentication.

Active Directory Configuration

The network contains one Active Directory domain named consolidatedmessenger.com.

The relevant organizational unit structure is shown in the following diagram.



The relevant Group Policy objects (GPOs) in the domain are configured as shown in the following table.

Group Policy name	Linked to OU
Desktops	Desktops
Laptops	Laptop
ServerComputers	Servers
AllComputers	CorpComputers
AllUsers	UserAccounts

Applications

The relevant applications on the network are shown in the following table.

Application name	Type	Description
FinanceApp1	Windows Application	A financial analysis application that is used by the finance users.
ERPApp1	Windows Application	A new ERP application that is deployed in a pilot project.

Server Configuration

The relevant servers are configured as shown in the following table.

Server name	Server role(s)	Office
DC01	Domain controller, DNS	Office1
DC02	Domain controller, DNS	Office1
File01	File server, DHCP	Office1
Radius01	Network Policy Server (NPS)	Office1
DC03	Domain controller, DNS, DHCP	Office2
DC04	Domain controller, DNS, DHCP	Office3

Client Configuration

Each office has 500 desktop computers that run Windows 7 Enterprise.

There are 250 mobile users that travel regularly between all three offices. The mobile users have laptop computers that run Windows 7 Enterprise.

To prevent the spread of malware, the company restricts the use of USB devices and only allows the use of approved USB storage devices.

Printers

The marketing group has several printers that are shared on File01. A shared printer name Printer1 is a high-performance, black-and-white printer. A shared printer named Printer2 is a high-definition, photo-quality, color printer. Printer2 should only be used to print marketing brochures.

The chief financial officer (CFO) releases new guidelines that specify that only users from finance are allowed to run FinanceApp1. Users in the Marketing OU report that they can run FinanceApp1. You need to ensure that only users in the Finance OU can run FinanceApp1.

What should you do?

- A. In the AllComputers GPO, create a new AppLocker executable rule.
- B. In the Desktops GPO and the Laptops GPO, create a new Windows Installer rule.
- C. In the AllComputers GPO, create a software restriction policy and define a new hash rule.
- D. In the Desktops GPO and the Laptops GPO, create a software restriction policy and define a new path rule.

Answer: A

Explanation:

Chapter 10 p 467- 468

Understanding the difference between SRP and AppLocker

You might want to deploy application control policies onto Windows operating systems earlier than Windows Server2008R2 or Windows7. You can use AppLocker policies only on the supported editions of Windows Server2008R2 and Windows7, but you can use SRP on supported editions of Windows beginning with Windows Server2003 and WindowsXP.

[http://technet.microsoft.com/en-us/library/ee460955\(WS.10\).aspx](http://technet.microsoft.com/en-us/library/ee460955(WS.10).aspx)

[http://technet.microsoft.com/en-us/library/dd548340\(WS.10\).aspx](http://technet.microsoft.com/en-us/library/dd548340(WS.10).aspx)

2. Users in the ERPApp1 pilot project report intermittent application issues. You need to consolidate all application events for the users in a central location.

What should you do?

- A. Configure event subscriptions.
- B. Configure the Advanced Audit Policy Configuration settings.
- C. Create a custom view in Event Viewer.
- D. Create a user-defined Data Collector Set.

Answer: A

Explanation:

Chapter 8 Lesson 1 p 302 - 305

A. Configure event subscriptions.

Event Viewer enables you to view events on a single remote computer. However, troubleshooting an issue might require you to examine a set of events stored in multiple logs on multiple computers.

Windows 7 includes the ability to collect copies of events from multiple remote computers and store them locally. To specify which events to collect, you create an event subscription. Among other details, the subscription specifies exactly which events will be collected and in which log they will be stored locally.

Once a subscription is active and events are being collected, you can view and manipulate these forwarded events as you would any other locally stored events.

B. Configure the Advanced Audit Policy Configuration settings.

[http://technet.microsoft.com/en-us/library/dd408940\(WS.10\).aspx](http://technet.microsoft.com/en-us/library/dd408940(WS.10).aspx)

C. Create a custom view in Event Viewer.

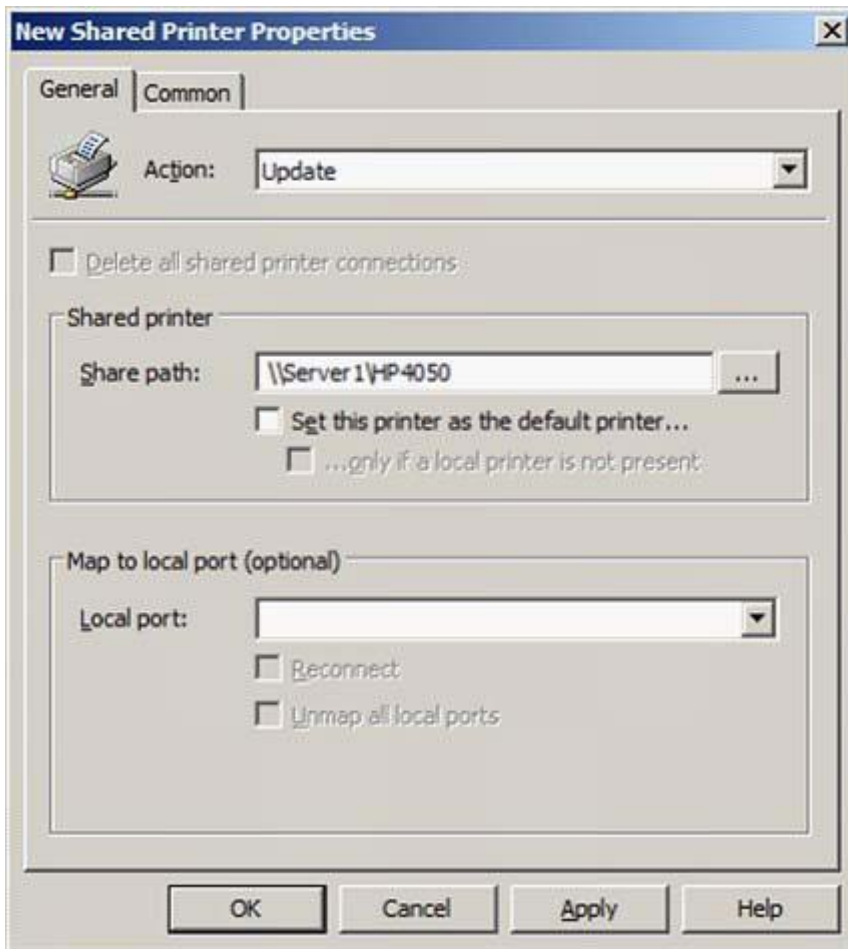
You can create a filter that includes events from multiple event logs that satisfy specified criteria. You can then name and save that filter as a custom view. To apply the filter associated with a saved custom view, you navigate to the custom view in the console tree and click its name.

D. Create a user-defined Data Collector Set.

You can create a custom Data Collector Set containing performance counters and configure alert activities based on the performance counters exceeding or dropping below limits you define.

After creating the Data Collector Set, you must configure the actions the system will take when the alert criteria are met.

Membership in the local Performance Log Users or Administrators group, or equivalent, is the minimum required to complete these procedures.



<http://www.youtube.com/watch?v=4xxKPgT5irU>

<http://www.youtube.com/watch?v=fKeIHBve57k>

3. The help desk reports that users in the Marketing OU print draft documents, e-mails, and other miscellaneous documents on Printer2. You need to recommend a solution so that marketing users print documents to Printer1 by default.

What should you do?

- A. Enable printer pooling.
- B. Configure Group Policy Preferences.
- C. Modify the priorities of the shared printers.
- D. Modify the permissions of the shared printers.

Answer: B

Explanation:

<http://technet.microsoft.com/en-us/library/cc732092.aspx>

Action: This type of preference item provides a choice of four actions: Create, Replace, Update, and Delete.

The behavior of the preference item varies with the action selected and whether the printer connection already exists.

Set this printer as the default printer - Select this check box to make the shared printer connection the default Windows printer for the current user.

Only if a local printer is not present - Select this check box to bypass changing the default printer if there is

a local printer configured on the computer. This setting is unavailable until you select the Set this printer as the default printer check box.

Note: A local printer is any printer that is not connected to a shared network printer. This includes physical printers connected to parallel, serial, and USB ports, TCP/IP printers, and virtual printers installed through software.

To create a new Shared Printer preference item

Open the Group Policy Management Console. Right-click the Group Policy object (GPO) that should contain the new preference item, and then click Edit.

In the console tree under User Configuration, expand the Preferences folder, and then expand the Control Panel Settings folder.

Right-click the Printers node, point to New, and select Shared Printer.

In the New Shared Printer Properties dialog box, select an Action for Group Policy to perform.

Enter shared printer settings for Group Policy to configure or remove.

Click the Common tab, configure any options, and then type your comments in the Description box.

Click OK. The new preference item appears in the details pane.

4. The Office1 network link is brought offline for emergency maintenance. Users in Office2 and Office3 report that they cannot connect to the wireless network. You need to recommend changes to ensure that users in all offices can connect to the wireless network if a WAN link fails.

What should you recommend?

- A. that redundant DHCP scopes be created
- B. that additional RADIUS servers be deployed
- C. that universal group caching be implemented
- D. that additional default gateways be configured

Answer: B

5. The company purchases 500 USB flash drives from a new hardware vendor and distributes them to the users. The help desk reports that the users are unable to access the new USB flash drives. You need to ensure that users can save data on the USB flash drives.

What should you do?

- A. Instruct the help desk to modify the BitLocker settings.
- B. Instruct the help desk to modify the Windows Defender settings.
- C. Request that an administrator modify the driver signing policy.
- D. Request that an administrator modify the device installation restriction policy.

Answer: D

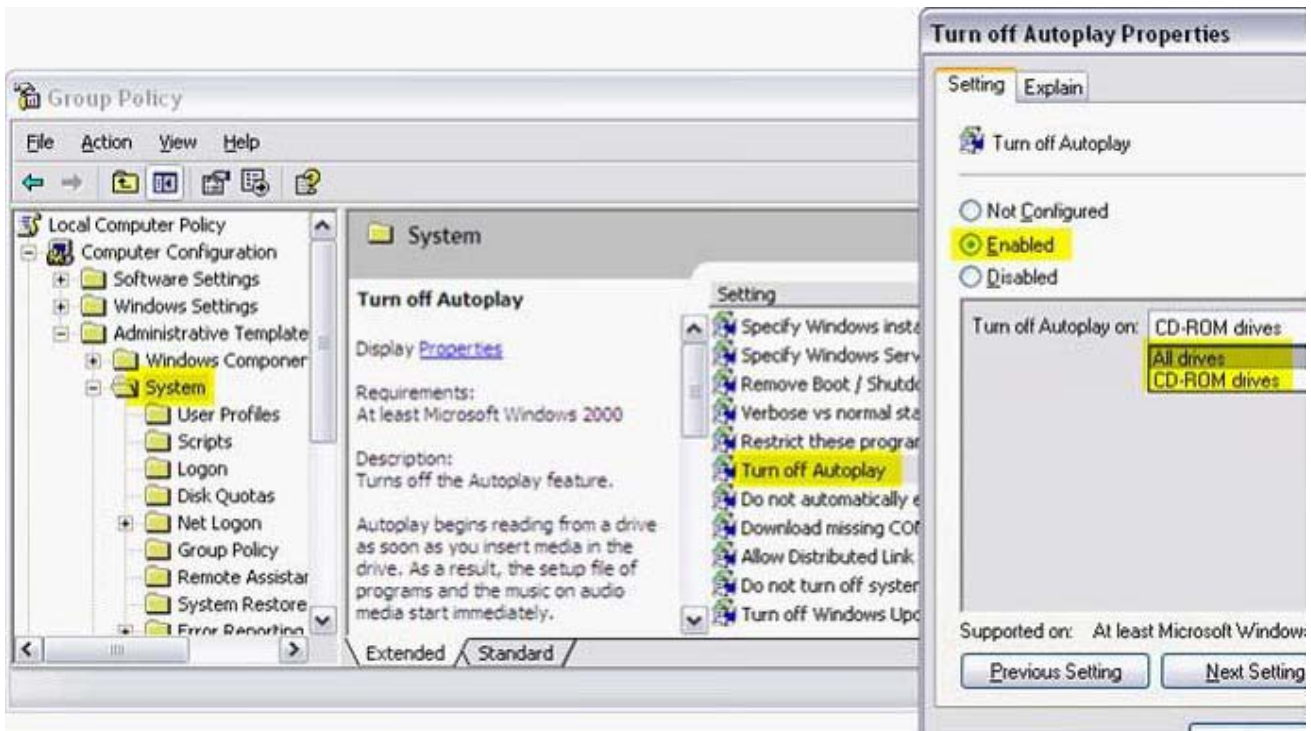
Explanation:

Open Group Policy Management and edit the applicable GPO in your Active Directory.

Disable autorun:

Computer Configuration \ Administrative Templates \ Windows Components \ AutoPlay Policies

Turn off Autoplay: Enabled



Limit to approved devices:

Computer Configuration \ Administrative Templates \ System > Device Installation \ Device Installation

Restrictions Allow installation of devices that match any of these device IDs: (add the corporate device)

Prevent installation of devices not described by other policy settings: Enabled

