

# ***PassTest***

Bessere Qualität , bessere Dienstleistungen!



## **Q&A**

<http://www.passtest.de>

Einjährige kostenlose Aktualisierung

**Exam : BCS-TTA1**

**Title : ISTQB-BCS Certified Tester  
Advanced Level- Technical  
Test**

**Version : Demo**

## 1. Topic 1, "Test Techniques various"

Definition-use pairs are identified during which of the following static analysis activities?

- A. Control flow analysis
- B. Data flow activities
- C. Coding standards analysis
- D. Cyclomatic complexity analysis

**Answer: B**

2.As part of a risk analysis, technical risks are analyzed. Which TWO factors influence technical risk?

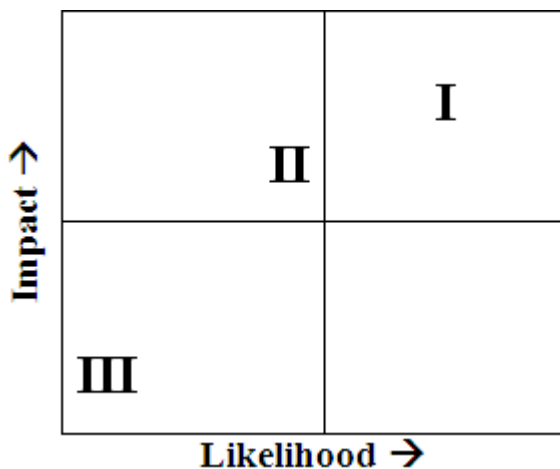
Number of correct answers: 2

- A. Complexity of technology
- B. Frequency of use of the affected failure
- C. Interfacing and integration issues
- D. Damage to image
- E. Lack of reasonable workaround

**Answer: A,C**

3.The result of a product risk analysis performed on components I, II and III of the airplane control system shows the following risk matrix: The project wants to mitigate the risks by defining different types of coverage depending on the risk level of the components.

Which of the following would be a meaningful solution for setting the coverage targets?



Number of correct answers: 1

- A. I: Condition determination coverage, II: Decision Coverage, III: Statement coverage
- B. I: Condition determination coverage, II: Statement coverage, III: Decision coverage
- C. I: Decision coverage, II: Condition determination coverage, III: Statement Coverage
- D. I: Multiple condition coverage, II: Decision coverage, III: Condition determination coverage

**Answer: A**

4.If you are flying with an economy ticket, there is a possibility that you may get upgraded to business class, especially if you hold a gold card in the airline's frequent flier program. If you don't hold a gold card, there is a possibility that you will get 'bumped' off the flight if it is full and you check in late. This is shown

in the figure hereafter. Note that each box (i.e. statement) has been numbered.

Three tests have been run:

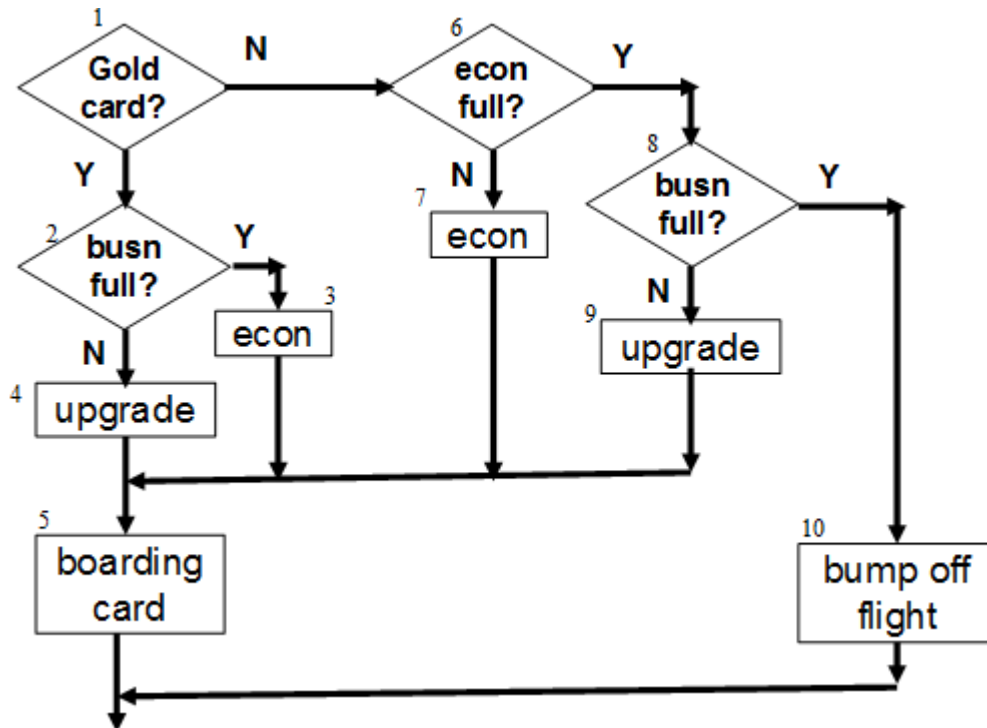
Test 1: Gold card holder who gets upgraded to business class

Test 2: Non-gold card holder who stays in economy

Test 3: A person who is bumped from the flight

What is the statement coverage of these three tests?

Number of correct answers: 1



- A. 60%
- B. 70%
- C. 80%
- D. 90%

**Answer: C**

5. An embedded software company is considering to improve the quality of its software components to be delivered to the integration team. After studying various experience papers that report a higher level of quality for software components, two main alternative techniques are identified: static analysis and dynamic analysis. In deciding which one is most applicable and how they relate to each other a detailed study is performed.

Which of the following are TWO key similarities between static analysis and dynamic analysis?

Number of correct answers: 2

- A. Both are performed using requirements as its major input document
- B. Both are usually undertaken by integration testers
- C. Both are usually undertaken by development during coding and unit testing
- D. Both are related to reviews
- E. Both usually use a tool

**Answer: C,E**