

# *PassTest*

Bessere Qualität , bessere Dienstleistungen!



## Q&A

<http://www.passtest.de>

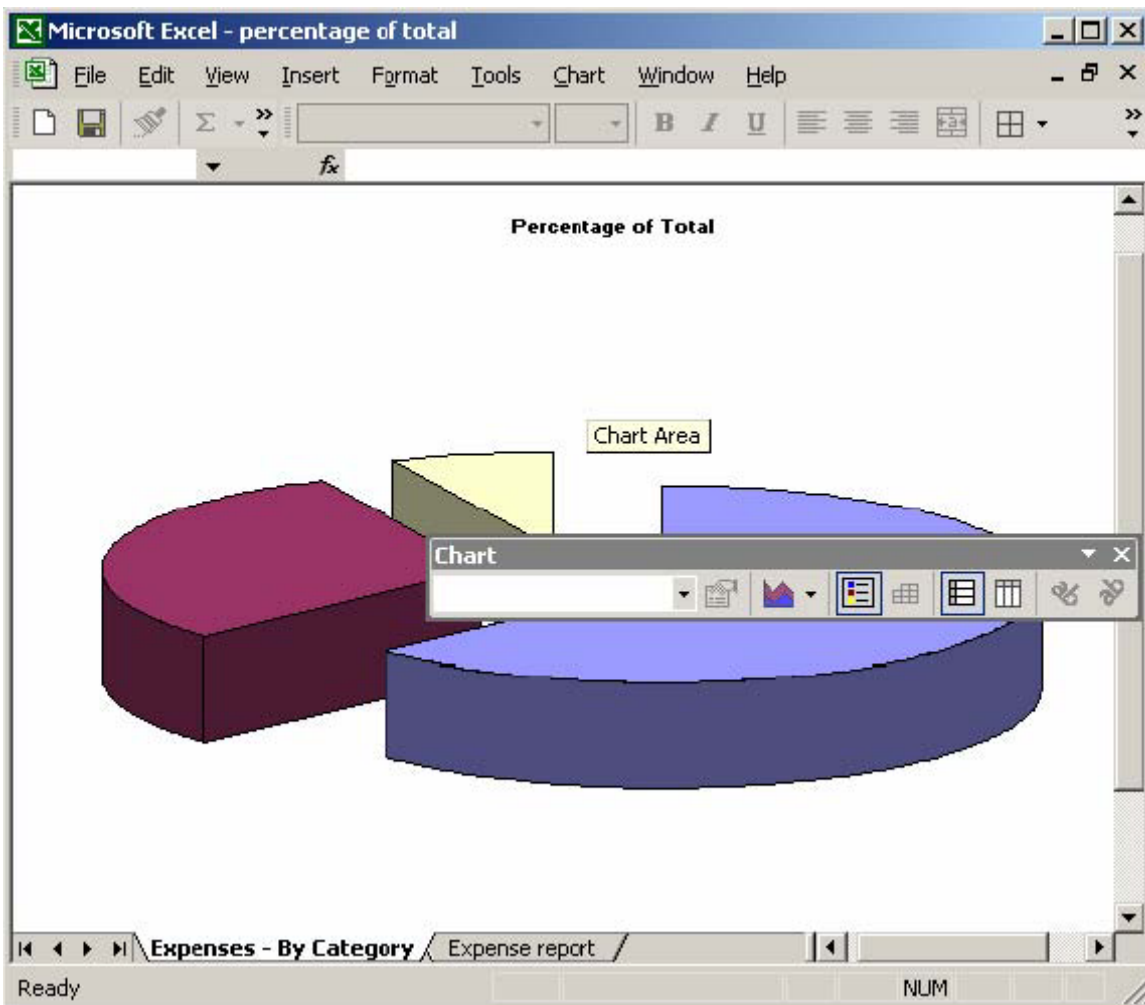
Einjährige kostenlose Aktualisierung

**Exam** : **MOS-E2K**

**Title** : **Microsoft Excel 2000 CORE**

**Version** : **DEMO**

1.



**Answer:**

Step 1: Select the Chart Type button



Step 2: Select Pie chart.

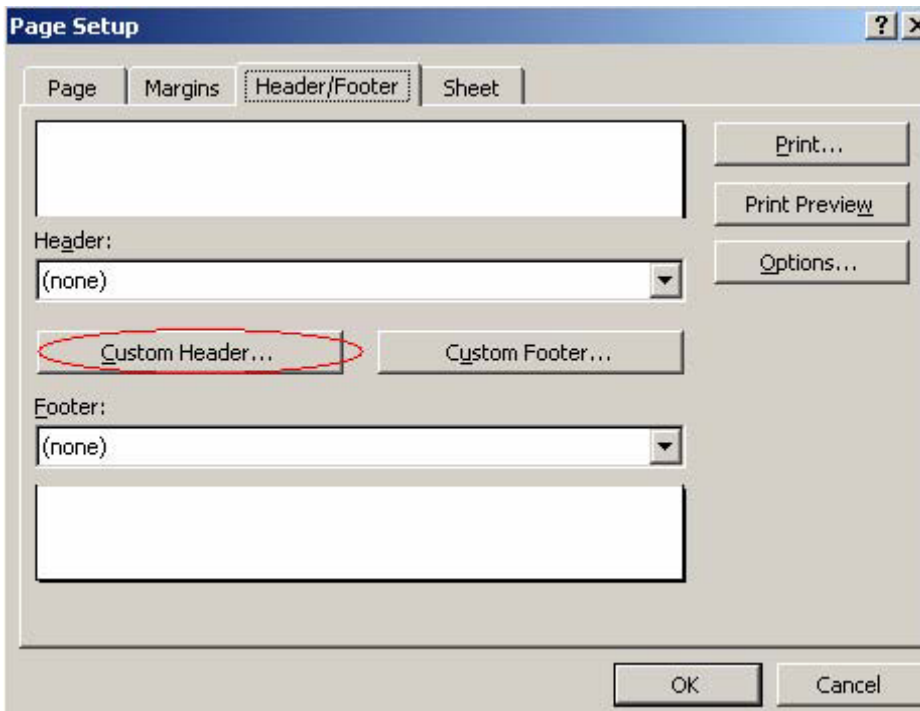
2. Add a header to the worksheet with Investment Analysis appearing at the left of the header, and the page number appearing at the right. In the footer, include the current data in the center.

		Years to invest					
		2	4	6	8	10	
Interest rate	4%	5,451.67	5,600.41	6,046.63	6,492.85	6,939.07	
	6%	5,501.25	5,649.99	6,096.21	6,542.43	6,988.65	
	8%	5,550.83	5,699.57	6,145.79	6,592.01	7,038.23	
	10%	5,600.41	5,749.15	6,195.37	6,641.59	7,087.81	
	12%	5,649.99	5,798.73	6,244.95	6,691.17	7,137.39	
	14%	5,699.57	5,848.31	6,294.53	6,740.75	7,186.97	
	16%	5,749.15	5,897.89	6,344.11	6,790.33	7,236.55	
	18%	5,798.73	5,947.47	6,393.69	6,839.91	7,286.13	
	20%	5,848.31	5,997.05	6,443.27	6,889.49	7,335.71	
	22%	5,897.89	6,046.63	6,492.85	6,939.07	7,385.29	
	24%	5,947.47	6,096.21	6,542.43	6,988.65	7,434.87	
26%	5,997.05	6,145.79	6,592.01	7,038.23	7,484.45		
28%	6,046.63	6,195.37	6,641.59	7,087.81	7,534.03		
30%	6,096.21	6,244.95	6,691.17	7,137.39	7,583.61		

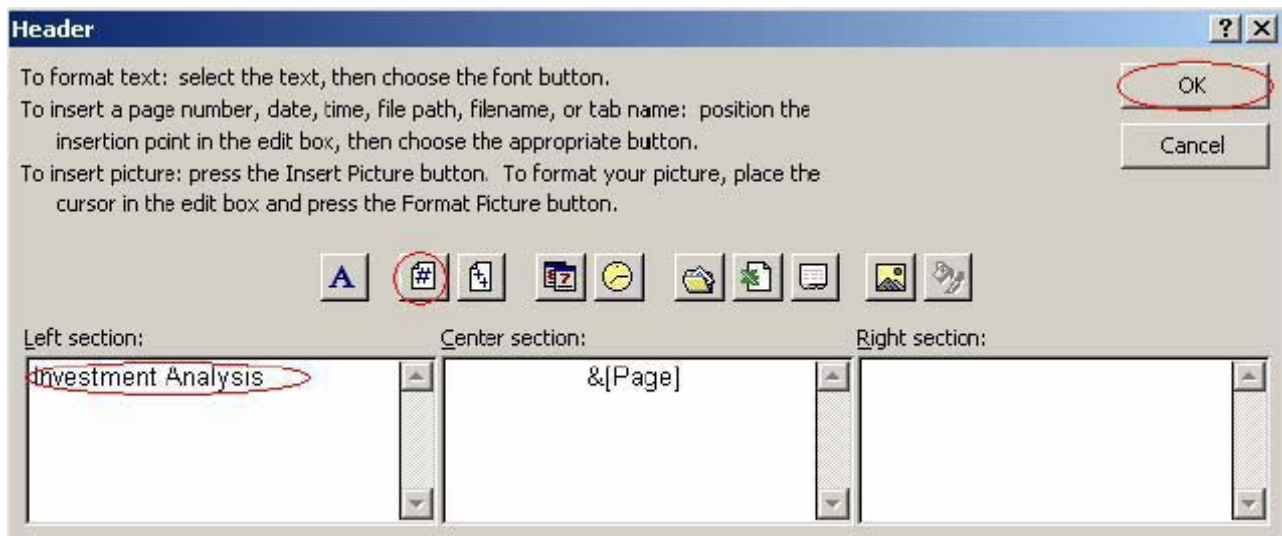
**Answer:**

Step 1: Select the View menu.

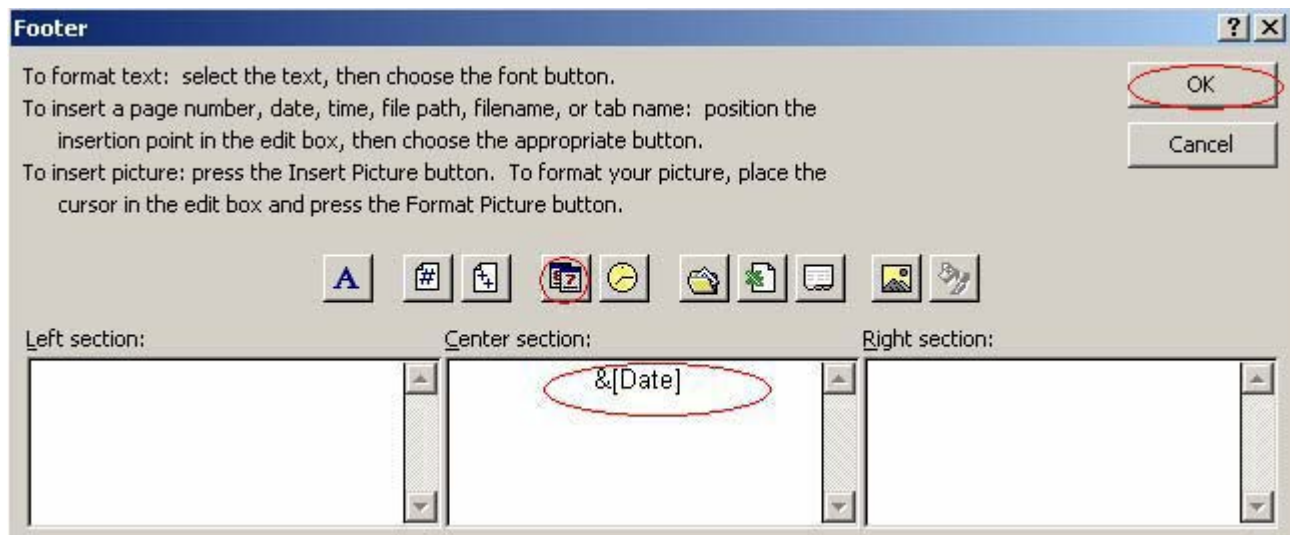
Step 2: Select the Header and Footer command.

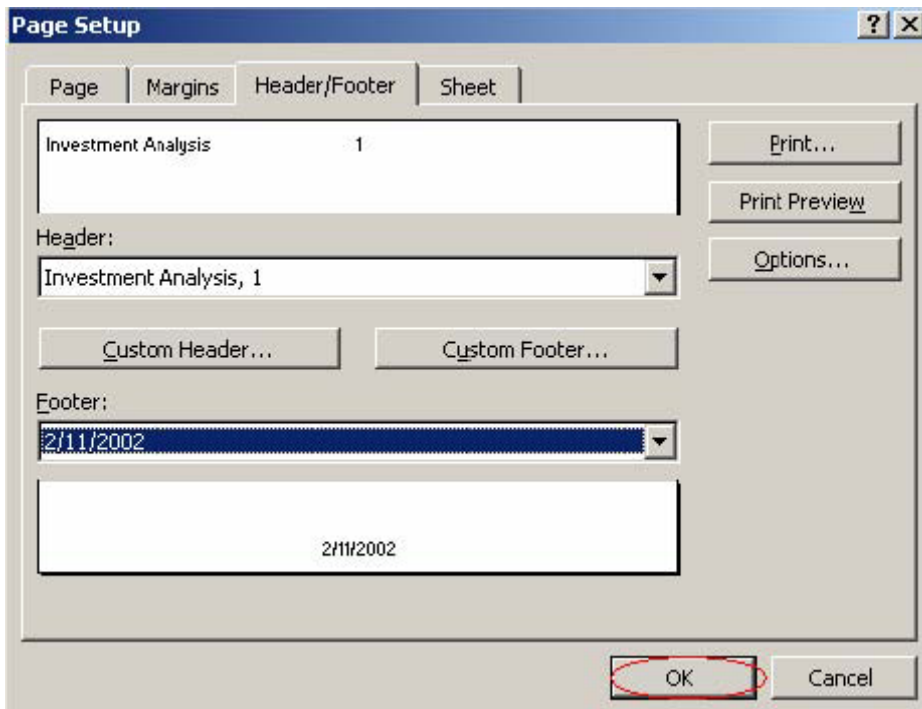


Step 4: Click in the Left section text box.

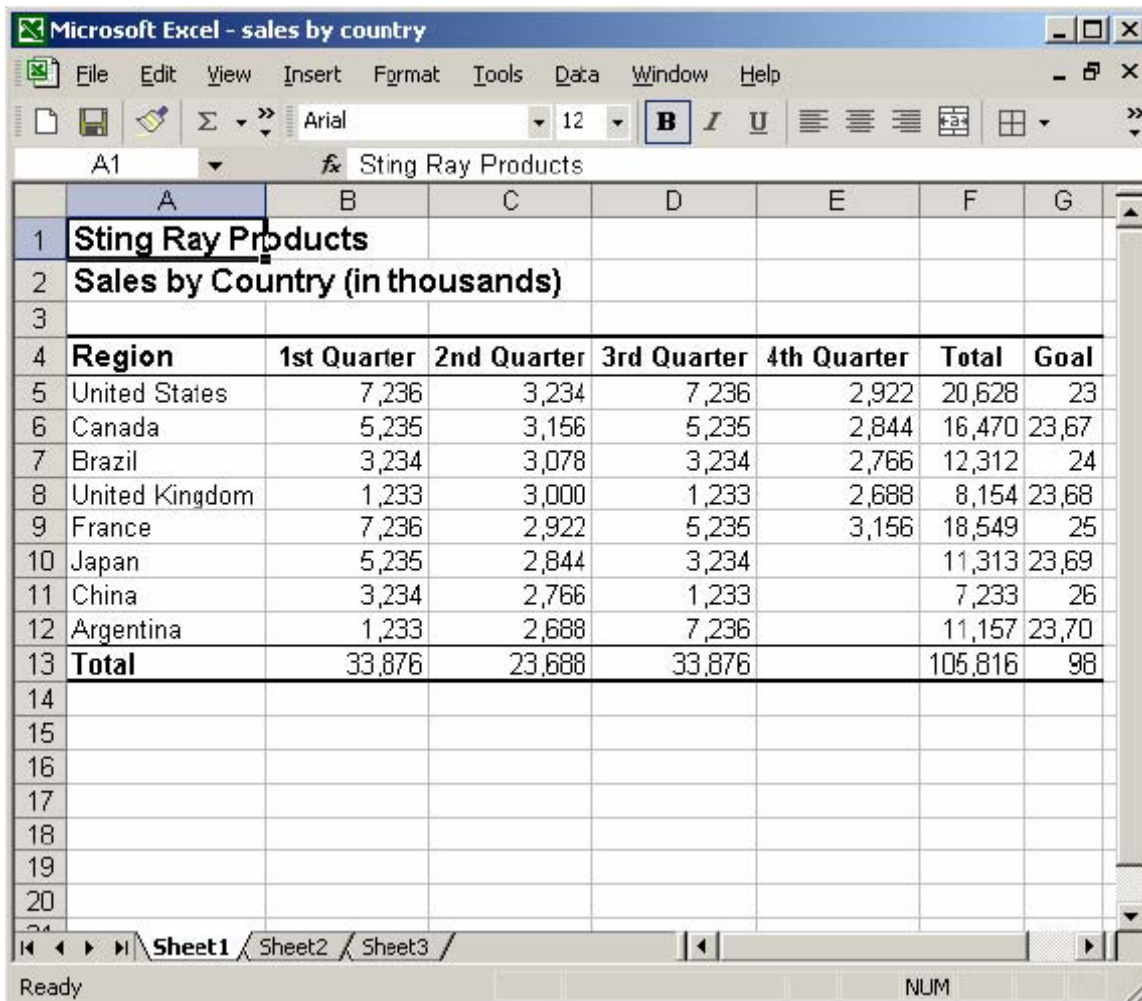


Step 6: Click in Center section text box. Step 7: Click the Page number button. Step 8: Click OK. Step 9: Click the Custom Footer button.





3. Clear the contents of the quarterly values for France in the range B9:E9.





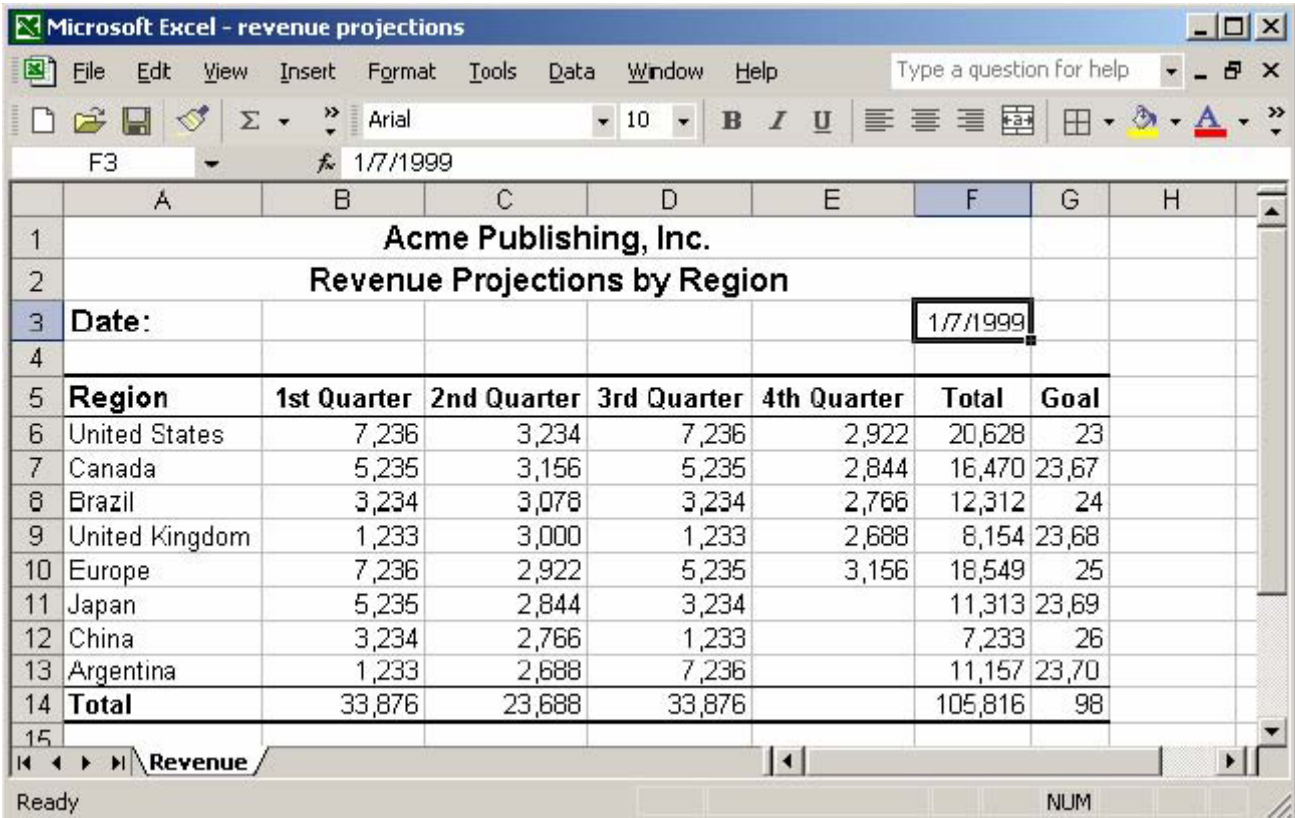
**Answer:**

Step 1: Click cell B9.

Step 2: Press the Shift key and click cell E9.

Step 3: Press the Delete key.

4.Delete the content in the cell range A9:F9. Then, add 1 row before Europe. Add England and Ireland in cells A9 and A10. Finally, copy the formula in cell F8 to cells F9 and F10.



**Answer:**

Step 1: Click cell A9. Step 2: Press the Shift key and click cell F9. Step 3: Press the Delete key. Step 4: Click cell A10. Step 5: Select the Insert menu. Step 6: Select the Rows command. Step 7: Click cell A9. Step 8: Type England and hit the Enter key. Step 9: Type Ireland and hit the Enter key. Step 10: Click the cell F8.

4th Quarter	Total	Goal
2,922	20,628	23
2,844	16,470	23,67
2,766	12,312	24
2,688	8,154	23,68
3,156	18,549	25
	11,313	23,69

5.In cell A3, type Date: and enter 01/07/99 in cell F3 as a date. When you are finished, enter the following revenue projections in cells D6 through E6 respectively. D6: 278927 E6: 344981

Region	1st Quarter	2nd Quarter	3rd Quarter	4th Quarter	Total
United States	7,236	3,234			10,470
Canada	5,235	3,156	5,235	2,844	16,470
Brazil	3,234	3,078	3,234	2,766	12,312
United Kingdom	1,233	3,000	1,233	2,688	8,154
Europe	7,236	2,922	5,235	3,156	18,549
Japan	5,235	2,844	3,234		11,313
China	3,234	2,766	1,233		7,233
Argentina	1,233	2,688	7,236		11,157
<b>Total</b>	<b>33,876</b>	<b>23,688</b>	<b>26,640</b>	<b>11,454</b>	<b>95,658</b>

**Answer:**

- Step 1: Click cell A3.
- Step 2: Type Date: and press enter.
- Step 3: Click cell F3.
- Step 4: Type 01/07/99 and press enter.
- Step 5: Click cell D6.
- Step 6: Type 278927 and press the Tab key.
- Step 7: Type 344981 and press Enter.