

PassTest

Bessere Qualität , bessere Dienstleistungen!



Q&A

<http://www.passtest.de>

Einjährige kostenlose Aktualisierung

Exam : **HP0-S25**

Title : **Implementing ProLiant
ML/DL/SL Servers**

Version : **Demo**

1.Which feature is exclusive to the ProLiant 100 Series family?

- A. BIOS Serial Console
- B. Automatic Server Recovery (ASR-2)
- C. Watchdog Timer
- D. Web-based Enterprise Management (WBEM)

Answer: C

2.What is required to enable RAID 6+0 on the HP Smart Array P411 Controller.? (Select two.)

- A. six enabled ports
- B. Smart Array Advanced Pack
- C. minimum of six disks
- D. minimum of four disks
- E. battery kit for installed BBWC

Answer: BE

3.Which actions can HP SIM take on a trap sent by a ProLiant server? (Select two.)

- A. send an email to the administrator
- B. call the administrator phone number
- C. launch a script
- D. collect a "survey" file of the server and send it to the HP Support team

Answer: AC

4.Which protocols can HP SIM use for the initial data collection? (Select two.)

- A. SNMP
- B. ICMP
- C. SMTP
- D. DMI

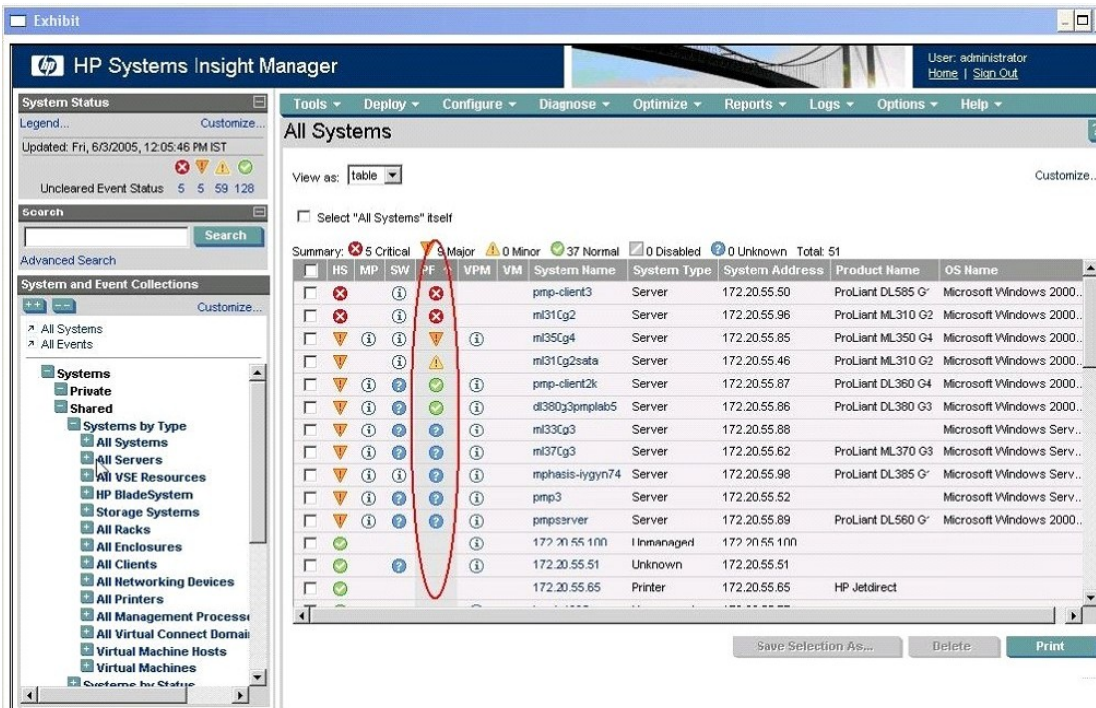
Answer: AD

5.Which protocol provides system management data through the Windows Management Instrumentation (WMI) framework for ProLiant servers?

- A. WBEM
- B. SNMP
- C. HTTP
- D. SSH

Answer: A

6.Click the Exhibit button.



You are viewing systems on the CMS of HP Systems Insight Manager. What is indicated by the presence of the PF column?

- A. VMM is installed.
- B. PMP is installed.
- C. VCRM is installed.
- D. IPM is installed.

Answer: B

7. What is a new feature of the IPv6 addressing scheme?

- A. a network prefix that enables routing decisions at the network layer
- B. a network host that specifies a particular device in the network
- C. an anycast address defined to send a packet to any one of a group of nodes
- D. address space allocation, based on an octet system

Answer: C

8. Your customer needs to be able to split and recombine mirrors on his DL380 G6 Server. What must be done to enable this feature?

- A. Enable the Mirror Splitting in Offline Mode option in ACU.
- B. Activate the Smart Array Advanced Pack (SAAP) by installing the activation license key in ORCA.
- C. Activate the Smart Array Advanced Pack (SAAP) by installing the activation license key in RBSU.
- D. Enable the Advanced Capacity Expansion option in ACU.

Answer: B

9. You have just added two internal drives to your ProLiant server. Which utilities should you use to allocate the raw space to the Smart Array volume and extend the Windows NTFS partition to use all the new space? (Select two.)

- A. diskpart.exe
- B. chkdsk.exe
- C. HP Storage Resource Manager
- D. ACU
- E. ORCA

Answer: AD

10. Which tool can be used to help optimize processor performance before and after modifications are implemented?

- A. Firmware Management CD
- B. ProLiant Processor Performance Utility
- C. HP Insight Performance Management module
- D. Insight Control Power Capping

Answer: C

11. Which tool enables reactive and proactive remote support to improve the availability of HP- supported servers and associated storage systems in a data center, relies on several HP components like Insight Management Agent and uses SNMP or WBEM for communication?

- A. HP Insight Remote Support Advanced
- B. HP Remote Diagnostic Monitor
- C. HP Systems Insight Manager
- D. Proactive 24 Care Pack service

Answer: A

12. When deploying an RDP solution, which network component must be installed and properly configured?

- A. SNMP
- B. WBEM
- C. SMTP
- D. DHCP

Answer: D

13. When purchasing the ProLiant Extended Warranty Care Pack, which features are included in addition to the Base Warranty features? (Select three.)

- A. software support
- B. committed response times
- C. hardware protection from manufacturer defect
- D. flexible support levels
- E. parts and labor

Answer: ABD

14. Which components are covered under the HP Pre-failure Warranty? (Select three.)

- A. power supplies
- B. host bus adapters

- C. processors
- D. SCSI drives
- E. fans
- F. memory

Answer: CDF

15.Which HP tool can be used to expand an existing array online?

- A. ROM-Based Setup Utility (RBSU)
- B. Option ROM Configuration for Arrays (ORCA)
- C. System Configuration Utility (SCU)
- D. HP System Management Homepage (SMH)
- E. Array Configuration Utility (ACU)

Answer: E

16.A second Smart Array Controller has been added to a ProLiant server. What should you check in the ROM-Based Setup Utility?

- A. Removable Flash Media Boot Sequence
- B. PCI Express 2.0 support
- C. Standard Boot Order
- D. Boot Controller Order

Answer: D

17.A customer wants you to configure his ProLiant G6 for maximum power saving. What is the recommended way for you to accomplish this?

- A. Plug in only one power cord, if the system is equipped with two power supplies.
- B. Disable Hyperthreading.
- C. Choose the "Minimum Power Usage" - profile in RBSU.
- D. Choose the "Minimum Power Management" - profile in Control Panel.

Answer: C

18.If the MTBF of a single drive is 200,000 hours, how many hours is the MTBF of a five drive array?

- A. 40,000 hours
- B. 50,000 hours
- C. 80,000 hours
- D. 200,000 hours
- E. 1,000,000 hours

Answer: A

19.Which type of disk drives are supported in an MSA 2000fc?

- A. FATA drives
- B. Ultra320 SCSI drives
- C. SAS drives
- D. FC drives

Answer: C

20. Where can you locate a SmartStart CD?

- A. HP Insight Foundation Suite for ProLiant
- B. HP Insight software
- C. SmartStart Scripting Toolkit
- D. Insight Rapid Deployment software

Answer: A