

# *PassTest*

Bessere Qualität , bessere Dienstleistungen!



## Q&A

<http://www.passtest.de>

Einjährige kostenlose Aktualisierung

**Exam** : **HP0-380**

**Title** : Planning & Design of HP  
Integrity Entry-Level Srvr  
Solutions

**Version** : DEMO

1. Click the Task button. Using drag and drop, match each service package with its correct description.

	Descriptions	Service Packages
place here	includes Support Plus24, Proactive 24 and Critical Services	Adaptive Enterprise Services
place here	includes Agility Assessment Services	Infrastructure Services
place here	includes Server Services and Network Storage Services	Support Services
place here	includes hardware support, software support, start-up and implementation	HP Care Pack Services

**Correct:**

**Green choice4---->Yellow Choice1**

**Green choice1---->Yellow Choice2**

**Green choice2---->Yellow Choice3**

**Green choice3---->Yellow Choice4**

2. An enterprise customer is considering a clustered HP Integrity server solution. Which questions should you ask to assist in this decision process? Select TWO.

- A. Does the customer have a supported LAN?
- B. How much downtime can the customer tolerate?
- C. How much power capacity does the customer have in their data center?
- D. How much would each hour of downtime cost?
- E. Does the customer have a requirement for system management?

**Correct: B D**

3. Which configuration tool offers real-time recognition of incompatible options and exceeding options restrictions when configuring an Integrity system?

- A. SalesBuilder for Windows (SBW)
- B. Rack Configurator
- C. StorageWorks Sizing Tool
- D. ActiveAnswers

**Correct: A**

4. A customer has a 64-bit application that has the following requirements: - minimum 4 processors - minimum 12GB of memory - redundant Fibre Channel Adapter (FCA) for storage  
Which cost-effective option should you recommend for the application?

- A. an rx1620 with 16GB of memory
- B. an rx2600 with 14GB of memory
- C. an rx4640 with 16GB of memory
- D. an rx8620 with at least 16GB of RAM configured with one nPar
- E. an rx8620 with 32GB of RAM configured with four nPars

**Correct: C**

**5.Your customer is going to purchase an rx2620 server with one HyperFabric2 Fibre Adapter (A6386A) and three single-port U160 PCI-X cards installed. Which statement is true regarding the installation of the HyperFabric2 Fibre Adapter to the first PCI-X slot?**

- A. There is no benefit to this installation.
- B. Fibre Channel cards can be installed only in slot 2, 3 or 4.
- C. HyperFabric2 Fibre Adapter (A6386A) is not supported on rx2620 systems.
- D. The first PCI-X slot has two dedicated I/O channels that provide double the I/O bandwidth.

**Correct:D**

**6.What is required to compile information about a customer's key business issues? Select TWO.**

- A. listing all geographical locations
- B. identifying the customer's strategic objectives
- C. defining the criteria of success
- D. identifying existing customer equipment
- E. defining customer electrical requirements

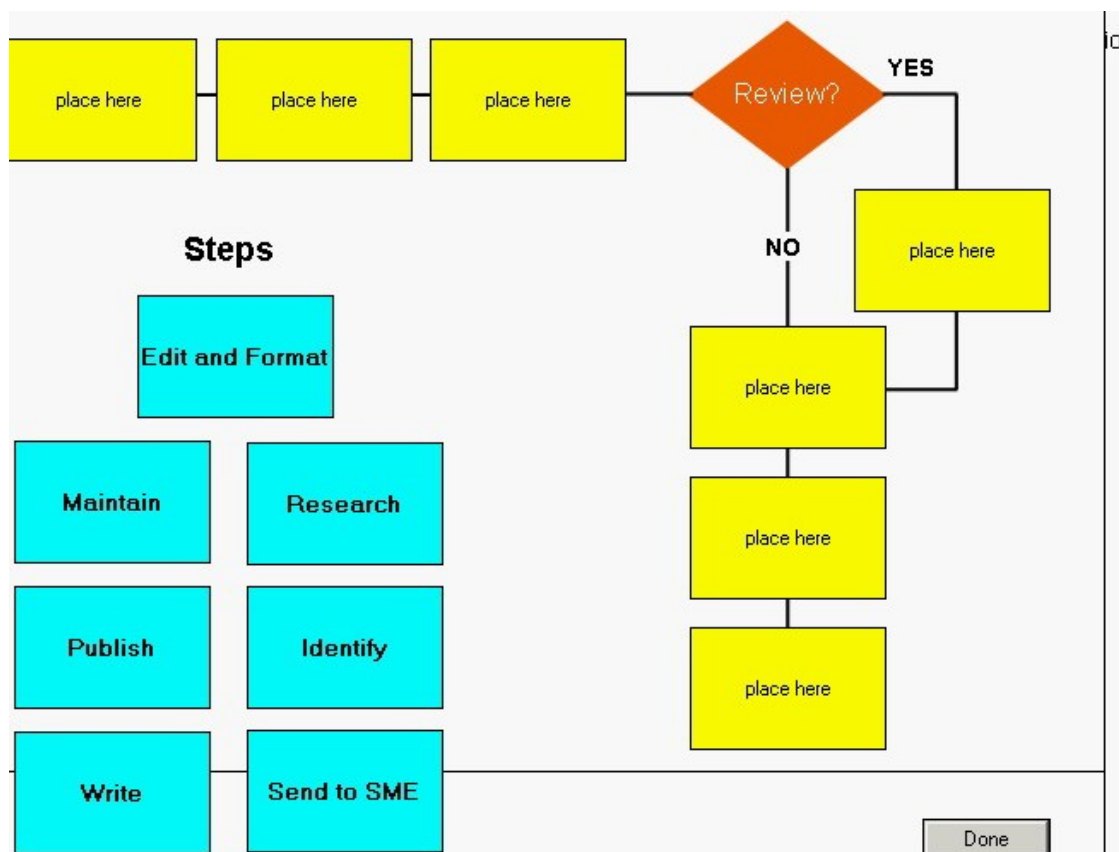
**Correct:B C**

**7.In which step of the Proposal Content Development Process do you verify that the proposal-ready content is based on non-technical, external sources such as the website [www.hp.com](http://www.hp.com)?**

- A. Identify
- B. Edit and Format
- C. Write
- D. Review

**Correct:D**

**8.Click the Task button. Using drag and drop, place each step in the proposal content development process in the correct location.**



Correct:

Green choice4---->Yellow Choice1

Green choice2---->Yellow Choice7

Green choice5---->Yellow Choice6

Green choice3---->Yellow Choice2

Green choice6---->Yellow Choice3

Green choice5---->Yellow Choice6

Green choice7---->Yellow Choice4

Green choice1---->Yellow Choice5

**9.You have a customer who has received a quote for two rx4640 servers with Microsoft Windows Server 2003 Standard Edition, four Fibre Channel adapters, and two additional network cards to run a Microsoft SQL test cluster. What is wrong with this quote?**

- A.It is missing two additional network cards for cluster traffic.
- B.It is missing clustering licenses.
- C.The proposed operating system is not supported.
- D.There are not enough PCI slots to support the proposed configuration.

**Correct:C**

**10.Your customer runs a retail outlet store. They have recently experienced rapid growth, and consequently their existing IT infrastructure will need to be upgraded. You will be proposing a solution that includes HP Integrity servers. Which customer requirements should you take into account during your planning? Select TWO.**

- A.system availability
- B.hours of operation

- C.performance needs
- D.user access privileges
- E.business management policy

**Correct:A C**

**11.It is brought to your attention that your customer recently experienced a break-in to their systems. What options would you suggest to the client to minimize break-in vulnerability? Select TWO.**

- A.Disable remote dial-in.
- B.Update all required patches, drivers and software versions.
- C.Disable the administrator account.
- D.Implement system policies to enforce strong passwords.
- E.Keep the ADMIN account password locked in a safe.

**Correct:A D**

**12.Your customer is looking for any entry-level Integrity server that offers multiple Hot Plug PCI-X I/O slots. Which server provides this feature?**

- A.rx1600
- B.rx2620
- C.rx4640
- D.rx7620

**Correct:C**

**13.In which default format does SalesBuilder for Windows (SBW) save whiteboards?**

- A..xml
- B..wwb
- C..xls
- D..doc

**Correct:B**

**14.Which tool can a partner download from the HP website for offline use?**

- A.HP Product Bulletin
- B.ActiveAnswers
- C.Onsite Agent's Reference Set (OARS)
- D.Enterprise Business Center Quick Quote

**Correct:A**

**15.You are asked to collect information about a client's IT infrastructure. What do you include from a site audit to help create a listing of the client's current IT environment? Select TWO.**

- A.user passwords
- B.WAN topology
- C.support contract
- D.location
- E.server details

**Correct:B E**

**16.You are using SalesBuilder for Windows (SBW) to prepare a quote for your customer. To which customer-usable format will SBW export a schematic diagram?**

- A.Adobe Acrobat (PDF)
- B.Visio (VSD)

C.Hypertext Markup Language (HTML)

D.Graphic Interchange Format (GIF)

**Correct:B**

**17.A company wants to implement a disaster recovery strategy. Currently they run daily full backups and all their tapes are kept offsite for safe keeping. Which action best meets their needs?**

A.You should make duplicates of tape media and store duplicates onsite for quick and easy access.

B.You should advise the company that they do not need a disaster recovery solution because all of their data is currently being backed up and stored offsite.

C.You should ask the backup administrator for a list of what data is backed up and create a site manual with all pertinent information.

D.You should suggest a disaster recovery solution that includes operating system recovery, hardware parts replacement, user training and step-by-step guidelines.

**Correct:D**

**18.A customer received a quote for a 4-node rx2620-2 active/active database cluster solution with a combined performance of 200,000 TPMs. The customer's requirement is for a solution capable of continuous availability of 200,000 TPMs, even with the loss of one node. What needs to be changed on the quote?**

A.nothing

B.provide for 10% more TPMs

C.provide for 15% more TPMs

D.provide for 20% more TPMs

E.provide for 25% more TPMs

**Correct:E**

**19.You create a configuration for a quote with SalesBuilder for Windows (SBW). What is the maximum validity of the configuration without updating the Knowledge Base (KB) file of SBW?**

A.two weeks

B.one month

C.three months

D.six months

**Correct:B**

**20.You are asked by a client to suggest methods to secure their network from intruders. What can you suggest to meet this need? Select TWO.**

A.Implement access control to the server room.

B.Upgrade all systems.

C.Configure call-back on all dial-up users.

D.Enable file encryption for all files on all servers.

**Correct:A C**