

# ***PassTest***

Bessere Qualität , bessere Dienstleistungen!



## **Q&A**

<http://www.passtest.de>

Einjährige kostenlose Aktualisierung

**Exam : EW0-300**

**Title : Extreme Networks  
Specialist....**

**Version : Demo**

1. When limit-learning is configured on a port and the limit is reached the following traffic still flows to the port.

- A. Packets destined for the active Mac addresses
- B. Broadcast traffic
- C. EDP traffic
- D. All of the above

Answer: D

2. ExtremeWare 7.0 supports both level 1 and level 2 IS-IS routers.

- A. TRUE
- B. FALSE

Answer: A

3. The integrated IS-IS protocol allows for mixing of IP-only, OSI-only, and dual (IP and OSI) routers.

- A. True
- B. False

Answer: A

4. In OSPF, the router type that is required to connect an area with another area is the:

- A. Designated Router
- B. Back-up Designated Router
- C. ASBR
- D. ABR

Answer: D

5. EAPS protection switching is similar to what can be achieved with the Spanning Tree Protocol but one of the big advantages of EAPS is:

- A. EAPS also supports star topologies
- B. EAPS has a recovery time of less than a second in case of link failure.
- C. An EAPS domain supports multiple root bridges, thus alternative path
- D. EAPS eliminates the need for protocols like ESRP or VRRP that bring default gateway redundancy.

Answer: B

6. On a RADIUS server you can distinguish between switch access and Netlogin authentication. Extreme provides a vendor specific attribute  
Extreme:Extreme-Netlogin-only =disabled/enabled.

User authentication for both Netlogin and switch access is allowed when the value is disabled.

When the value enabled user authentication is restricted to Netlogin only.

- A. True
- B. False

Answer: A

7.The following modes of operation are supported with the Network login feature.  
(choose all that apply)

- A. Secure mode
- B. Campus mode
- C. Quick Mode
- D. ISP mode

Answer: A,B,C,D

8.An LSP is a link state packet used by which routing protocol?

- A. OSPF
- B. RIP
- C. BGP
- D. None of these

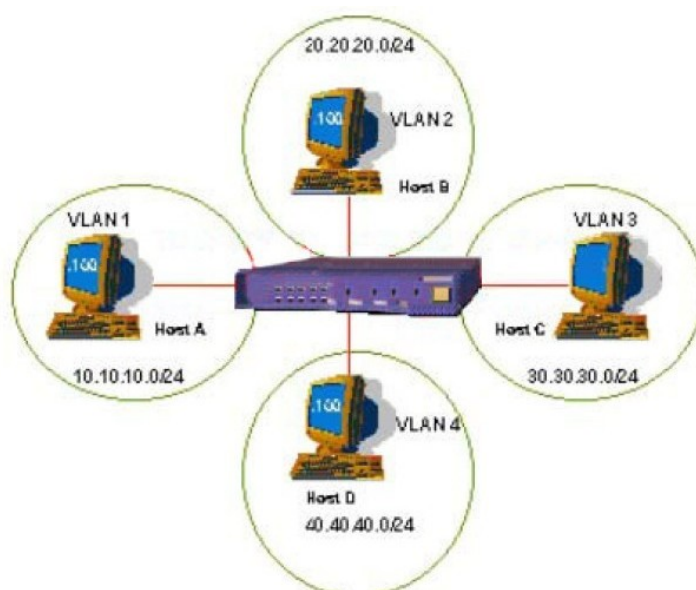
Answer: D

9.It is possible to set an STP-threshold to switch from a shared tree to a shortest path tree. This switch over will be initiated by:

- A. The Rendezvous Point
- B. The Bootstrap Router
- C. A last hop router
- D. The router nearest to the source

Answer: C

10.Exhibit:



```
create access-list ip1 ip destination 20.20.20.100/32 source 10.10.10.100/32 permit ports any ignore-overlap
create access-list ip2 ip destination 30.30.30.100/32 source 10.10.10.100/32 permit ports any ignore-overlap
create access-list ip3 ip destination 40.40.40.100/32 source 10.10.10.100/32 permit ports any ignore-overlap
create access-list ip4 ip destination 10.10.10.100/32 source 20.20.20.100/32 permit ports any ignore-overlap
create access-list ip5 ip destination 10.10.10.100/32 source 30.30.30.100/32 permit ports any ignore-overlap
create access-list ip6 ip destination 10.10.10.100/32 source 40.40.40.100/32 permit ports any ignore-overlap
create access-list default rule ip destination any source any deny ports any
```

According to accompanying diagram and ACL configuration it is possible for Host A (10.10.10.100) and Host C (30.30.30.100) to successfully communicate.

- A. TRUE
- B. FALSE

Answer: A

11.The maximum number of EAPS domains supported per switch and ring is?

- A. 64
- B. 32
- C. 16
- D. 8

Answer: A

12.In Extreme Ware, which one of the following is an optional ESRP configuration that allows you to connect active hosts directly to an ESRP master or standby switch.

- A. ESRP Groups
- B. ESRP Domain
- C. ESRP Host Attach
- D. None of these

Answer: C

13.Which CLI command configures DVMRP on all IP multicast interfaces.

- A. config dvmrp add vlan all
- B. config dvmrp add all
- C. enable dvmrp
- D. enable dvmrp vlan all

Answer: A

14.The following CLI command is valid to advertise SLB virtual servers in OSPF ith a cost of 10.

Enable ospf export vip cost 10

- A. True
- B. False

Answer: A



```
create access-list ip1 ip destination 20.20.20.100/32 source 10.10.10.100/32 permit ports any ignore-overlap
create access-list ip2 ip destination 30.30.30.100/32 source 10.10.10.100/32 permit ports any ignore-overlap
create access-list ip3 ip destination 40.40.40.100/32 source 10.10.10.100/32 permit ports any ignore-overlap
create access-list ip4 ip destination 10.10.10.100/32 source 20.20.20.100/32 permit ports any ignore-overlap
create access-list ip5 ip destination 10.10.10.100/32 source 30.30.30.100/32 permit ports any ignore-overlap
create access-list ip6 ip destination 10.10.10.100/32 source 40.40.40.100/32 permit ports any ignore-overlap
15. create access-list default rule ip destination any source any deny ports any
```

According

to accompanying diagram and ACL configuration it is possible to telnet from host A to any of the switch IP addresses.

- A. True
- B. False

Answer: B

16.Extreme Networks IS? Chipset switches allows you to run simultaneously the Radius and Tacacs+features.

- A. True
- B. False

Answer: B

17.OSPF requires that all areas attach directly to the backbone area, and that all attachments are made with a direct physical connection.

- A. True
- B. False

Answer: B

18.An Ethernet Automatic Protection Switching (EAPS) domain relies on a control VLAN.

The ports in that control VLAN ports must be tagged, and participating in the ring only.

- A. True
- B. False

Answer: A

19.In SLB, Port Translation Mode is similar to Translation Mode,except that in Port Translation Mode the physical Port where the node connects to must be configured as a Fast Ethernet Half Duplex port.

- A. True
- B. False

Answer: B

20.In PIM sparse mode the Bootstrap Router election is based on the highest IP address.

- A. True
- B. False

Answer: B

21.ESRP-enabled switches can utilize either an IP address or an IPX net ID for their protected VLANs.

- A. TRUE

B. FALSE

Answer: A

22.An IP-only IS-IS router (or "IP-only" router) is defined to be

- A. A router which uses IS-IS as the routing protocol for IP
- B. Does not otherwise support OSI protocols
- C. One of the IS-IS router types
- D. All of the above

Answer: D

23.On an Extreme Networks switch, how many bits comprise an OSPF area ID?

- A. 32 BITS
- B. 48 BITS
- C. 64 BITS
- D. 128 BITS

Answer: A

24.What is the RP-set?

- A. It is the information of which RP are available for what Multicast groups.  
It is send by the BSR towards all PIM routers
- B. It is the information of which multicast groups are active  
It is send by the RP towards all PIM routers
- C. It is the information of which BSR are available for what Multicast groups.  
It is send by RP towards all PIM routers
- D. It is the information, stored by all RP, needed to find the BSR,

Answer: A

25.The majority of Extreme Networks switches have a dedicated out of band management port and VLAN. The 10/100BASE-TX Ethernet management port allows you to communicate directly to the CPU of the switch. If you want the switch to forward traffic from the mgmt VLAN to other VLANS you just have to enable ipforwarding on all VLANS including the management VLAN.

- A. TRUE
- B. FALSE

Answer: B

26.Which of the following statements fit the description of PIM sparse mode? (choose three that apply)

- A. PIM sparse mode is suitable for network with minimal multicast deployment.



- B. PIM sparse mode builds shared trees based on a common Rendez-Vous Point
- C. In PIM sparse mode the RPF check depends on the tree type
- D. An explicit join is not required in PIM sparse mode.

Answer: A,B,C,D

27.How many bits in the IP TOS field does a Summit 48i examine?

- A. 4
- B. 6
- C. 8
- D. 16

Answer: B

28.What is the CLI command you would use to configure a VLAN to be protected by ESRP?

- A. enable esrp vlan <vlan>
- B. enable esrp vlan <vlan> detail
- C. config esrp vlan <vlan>
- D. config esrp vlan <vlan> detail

Answer: A

29.Extreme Ware 7.0 can support which OSPF authentication on a per VLAN basis:

- A. MD5
- B. Simple-password
- C. Encrypted simple-password
- D. All of these

Answer: D

30.How does an IGMP router learns about the existence of hosts in multicast groups:

- A. By receiving a response on an IGMP membership query
- B. By looking into the ARP cache
- C. There is no dynamic learning process, instead static FDB entries are used
- D. None of the above

Answer: A