

PassTest

Bessere Qualität , bessere Dienstleistungen!



Q&A

<http://www.passtest.de>

Einjährige kostenlose Aktualisierung

Exam : 642-691

**Title : CCIP BGP + MPLS Exam
(BGP + MPLS)**

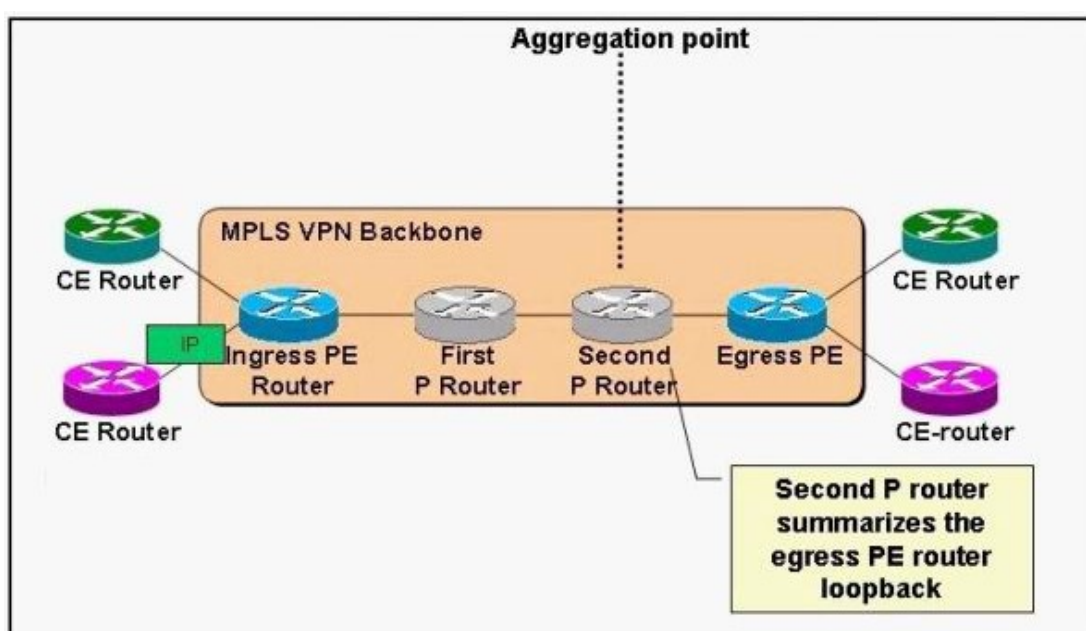
Version : Demo

1. For which purpose is the command `mpls ldp maxhops` used?

- A. In large ATM-MPLS networks, the LFIB can become too large and it may be necessary to limit the maximum diameter of the MPLS LSPs.
- B. Because downstream-on-demand label allocation uses hop count to control loop detection, it may be necessary to limit the maximum diameter of the MPLS network.
- C. Because end-to-end delay can cause problems with some voice applications, it may be necessary to limit the maximum diameter of the MPLS network.
- D. When interconnecting large frame mode MPLS and cell mode networks it may be necessary to limit the maximum network diameter to prevent forwarding loops.

Answer: B

2. Refer to the diagram.



What problem can be caused by the second P router summarizing the loopback address of the egress PE router?

- A. The first P router will be faced with a VPN label which it does not understand.
- B. The second P router will be faced with a VPN label which it does not understand.
- C. The egress PE router will not be able to establish a label switch path (LSP) to the ingress PE router.
- D. A label switch path (LSP) will be established from the ingress PE router to the egress PE router, an event that is not desirable.
- E. The ingress PE router will not be able to receive the VPN label from the egress PE router via MP-IBGP.

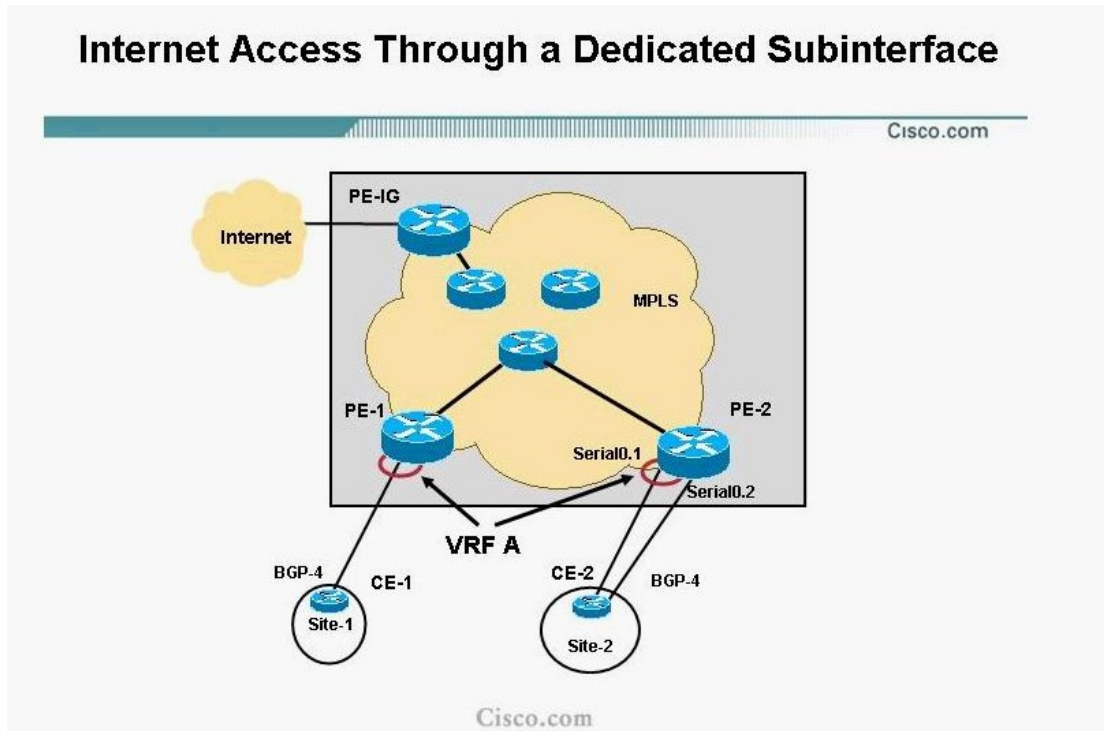
Answer: B

3. In a central services topology, which routes do client VRFs contain?

- A. routes from the client site, but not from the server site
- B. routes from the server site, but not from the client site
- C. routes from both the client site and the server site
- D. only EBGP routes from either the client site or the server site

Answer: C

4. On a dedicated subinterface implementation, PE-2 must establish an address-family vrf IPv4 BGP neighbor relationship with which router?



- A. CE-1
- B. CE-2
- C. PE-1
- D. PE-IG
- E. CE-1 and CE-2
- F. PE-1 and PE-IG

Answer: B

5. What are three drawbacks of a peer-to-peer VPN using a shared provider edge (PE) router? (Choose three.)

- A. A full mesh of virtual circuits is required between the customer sites.
- B. All the customers have to share a common IP address space.
- C. Optimal routing between customer sites cannot be guaranteed.
- D. The shared PE router has to know all routes for all customers.
- E. Packet filters are required on the PE routers.

Answer: BDE

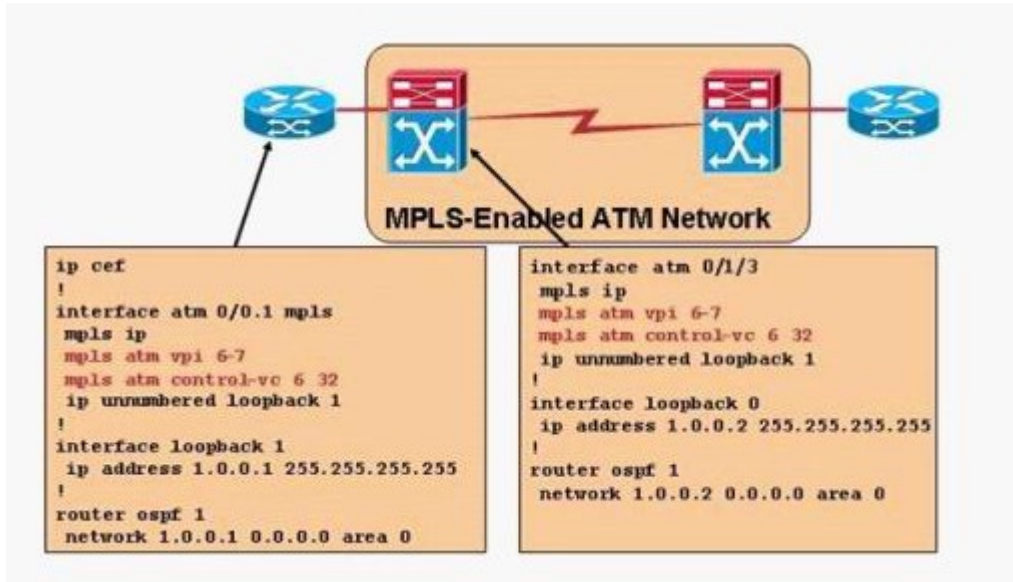
6. Which two of the following statements regarding LDP are true? (Choose two.)

- A. LDP can also be used between nonadjacent routers using multicast LDP hello messages.
- B. LDP does not require periodic hello messages once the LDP session has been established between the LDP peers.
- C. LDP hello messages use TCP packets with a destination port number of 646.
- D. Multiple sessions can be established between a pair of LSRs if they use multiple label spaces.

E. Per-platform label space can be identified by a label space ID of 0 in the LDP identifier field.

Answer: DE

7. Refer to the exhibit.



Which two of the following statements about the MPLS configurations are true? (Choose two.)

- A. The VPI range being configured is the default VPI range.
- B. The router is missing the mpls label protocol ldp configuration command on its ATM 0/0.1 subinterface to make it an LC-ATM enabled subinterface.
- C. There is a problem with the configurations because the control VC should be set to 0 32 instead.
- D. The ATM switch is using VC merge since VC merge is enabled by default.
- E. For MPLS label allocations, both VPI 6 and 7 can be used.

Answer: DE

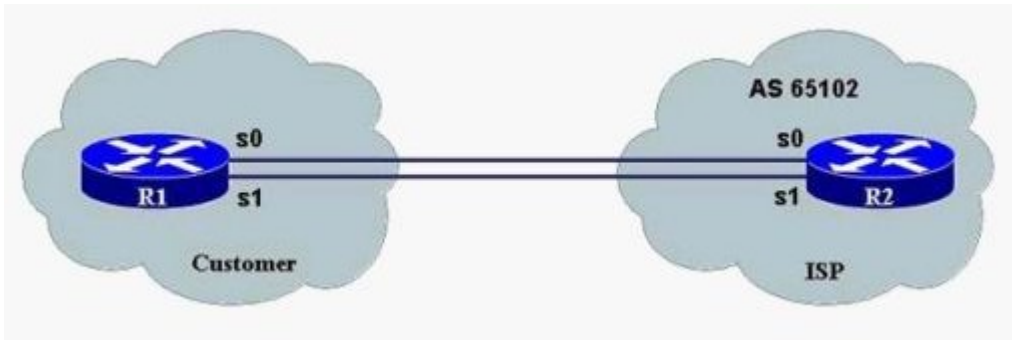
8. What does the following command accomplish?

sanjose#clear ip bgp 10.1.1.1 in prefix-filter

- A. The sanjose router will perform an outbound soft reconfig to the 10.1.1.1 neighbor.
- B. The sanjose router will send out the ORF prefix-list so that a new route refresh will be received from the 1.1.1 neighbor.
- C. The 10.1.1.1 router will perform an inbound soft reconfig on the updates from the sanjose neighbor.
- D. The 10.1.1.1 router will send out the ORF prefix-list so that a new route refresh will be received from the sanjose neighbor.
- E. The bgp session between the sanjose and the 10.1.1.1 router will be reset so that all the new bgp updates from the 10.1.1.1 router can be processed by the inbound prefix-list at the sanjose router.
- F. The bgp session between the sanjose and the 10.1.1.1 router will be reset so that all the new bgp updates from the sanjose router can be processed by the inbound prefix-list at the 10.1.1.1 router.

Answer: B

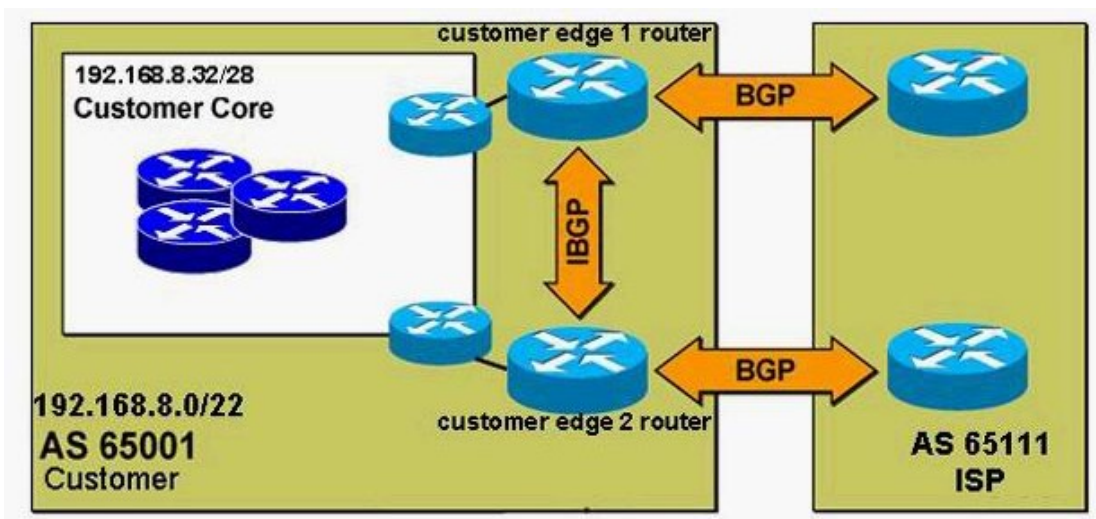
9. Based on the topology diagram shown in the exhibit, when should BGP be used as the routing protocol between the customer and the ISP?



- A. If physical link failures can not be detected by the link-level procedures.
- B. If the customer wants to affect how the ISP will route the customer's traffic out to the rest of the Internet.
- C. If the ISP does not support static routing with the customer.
- D. If the customer is using provider-assigned (PA) addresses inside the customer's network.
- E. If the customer is using private addresses inside the customer's network.

Answer: A

10. Based on the network diagram shown in the exhibit, what is the correct configuration on the customer edge router used to conditionally announce the customer networks to the ISP?



- A. router bgp 65001
! neighbor commands not shown
network 192.168.8.0 mask 255.255.252.0
!
- B. router bgp 65001
! neighbor commands not shown
aggregate-address 192.168.8.0 255.255.252.0 summary-only
!
- C. router bgp 65001
! neighbor commands not shown
network 192.168.8.0

```
network 192.168.9.0
network 192.168.10.0
network 192.168.11.0
!
ip route 192.168.8.0 255.255.255.0 null0
ip route 192.168.9.0 255.255.255.0 null0
ip route 192.168.10.0 255.255.255.0 null0
ip route 192.168.11.0 255.255.255.0 null0
D. router bgp 65001
! neighbor commands not shown
aggregate-address 192.168.8.0 255.255.252.0 summary-only
!
router ospf 1
network 192.168.8.0 0.0.3.255 area 0
E. router bgp 65001
! neighbor commands not shown
aggregate-address 192.168.8.0 255.255.252.0
!
ip route 192.168.8.0 255.255.252.0 null0
```

Answer: A