

PassTest

Bessere Qualität , bessere Dienstleistungen!



Q&A

<http://www.passtest.de>

Einjährige kostenlose Aktualisierung

Exam : 070-291

Title : Implementing, Managing,
and Maintaining a Microsoft
Windows Server 2003
Network Infrastructure

Version : DEMO

1. Drag drop

You are the network administrator for a Web hosting company. All servers run Windows Server 2003. All client computers run Windows XP Professional.

Your company is assigned the following IP address ranges by the ISP:

>131.107.10.0 through 131.107.10.255

>131.107.11.0 through 131.107.11.255

The company's data center contains 400 Windows Server 2003 computers and consists of two subnets named subnet A and subnet B. Subnet A contains 200 servers and uses the 131.107.10.0 network address. Subnet B also contains 200 servers and uses the 131.107.11.0 network address. All server IP addresses are assigned by DHCP. All computers in the data center have valid Internet-accessible IP addresses.

As a result of a corporate acquisition, 200 additional servers will be added to your company's data center within one month. The new servers will be placed on the network segment that maps to subnet A. The existing router does not have the capacity for an additional subnet, and the budget does not allow the purchase of a new router. You will

need to add the additional servers to the existing subnet A. The ISP assigns you the additional IP address range 131.107.12.0 through 131.107.12.255.

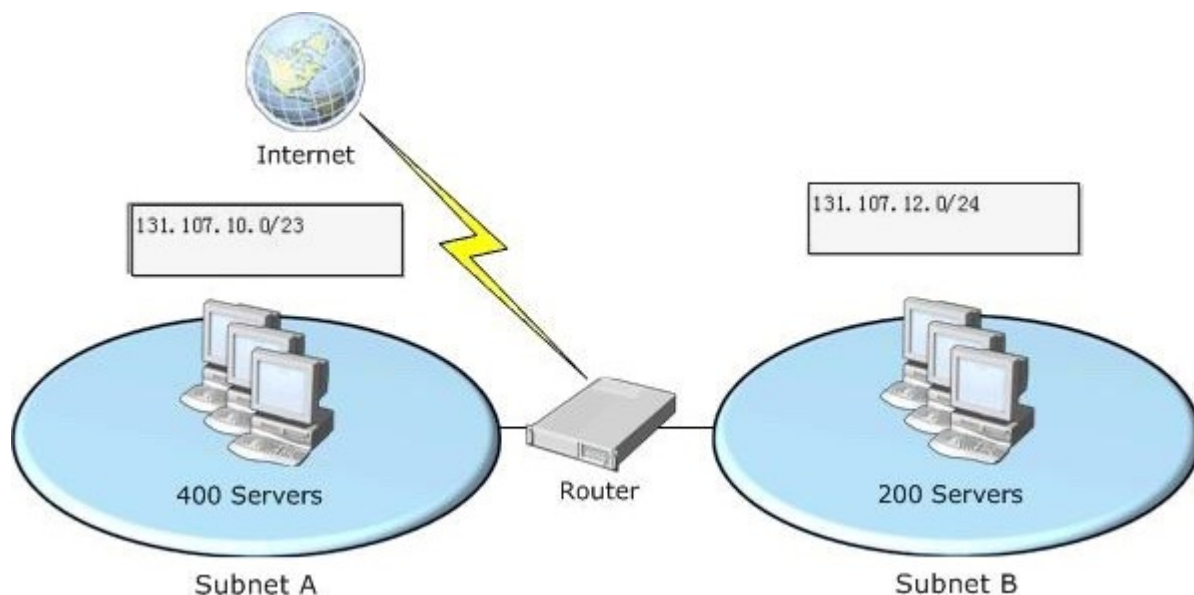
You need to change the IP addressing scheme to accommodate all required servers in subnet A and subnet B. You are authorized to make any necessary changes.

The diagram in the work area shows the network configuration and the planned number of servers for each subnet.

Which IP address should be assigned to each subnet?

To answer, drag the appropriate IP address or addresses to the correct locations in the work area.

IP address IP Addresses



1> 131.107.10.0/23

2> 131.107.11.0/23

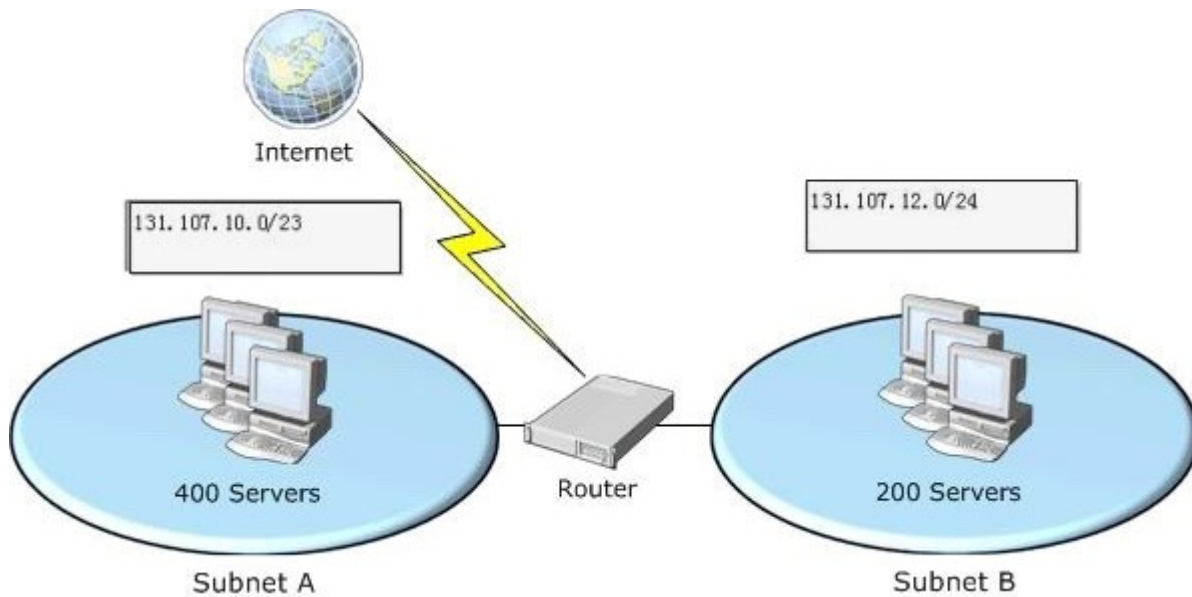
3> 131.107.12.0/23

4> 131.107.10.0/24

5> 131.107.11.0/24

6> 131.107.12.0/24

Answer



:

2.You are the network administrator for your company.All servers run Windows Server 2003. All servers are configured with static IP addresses.All client computers run Windows XP Professional.All client computers are configured as DHCP clients.

The company has a main office and one branch office.The offices are separated by a router.A DHCP server is deployed in each office.

One of the DHCP servers shuts down unexpectedly.It takes four hours to repair the server.During that time, several mobile users connect their portable computers to the network and report that they cannot connect to shared resources on the network.

After the server is repaired, you create a new scope on each DHCP server that includes IP addresses for the other office.You activate the scopes.

You test the new DHCP configuration by shutting down the DHCP server in the main office.You find out that the client computers in the main office are not receiving IP addresses from the DHCP server in the branch office. You need to ensure that when the DHCP server in one office fails, the client computers will receive a correct IP

address configuration from the DHCP server in the other office.

What are two possible ways to achieve this goal? (Each correct answer presents a complete solution.Choose two.)

- A.Configure the router between the offices to forward BOOTP broadcasts.
- B.Configure the DHCP server in each office with a DHCP scope that includes the same IP addresses as the DHCP server in the other office.Activate the scope.
- C.Configure the DHCP server in each office with an additional network adapter.Connect each new network adapter to the local network.Assign an IP address from the other office's network to each new network adapter.
- D.Install and configure a DHCP relay agent in each office.

Answer: DA

3.You are the network administrator for your company.The network consists of a single Active Directory domain.All servers run Windows Server 2003.

The network contains a Web server named Server1 that runs IIS 6.0 and hosts a secure Web site.The Web site is accessible from the intranet, as well as from the Internet.All users must authenticate when they connect to Server1.

All users on the Internet must use a secure protocol to connect to the Web site.Users on the intranet do not need to use a secure protocol.

You need verify that all users are using a secure protocol to connect to Server1 from the Internet.

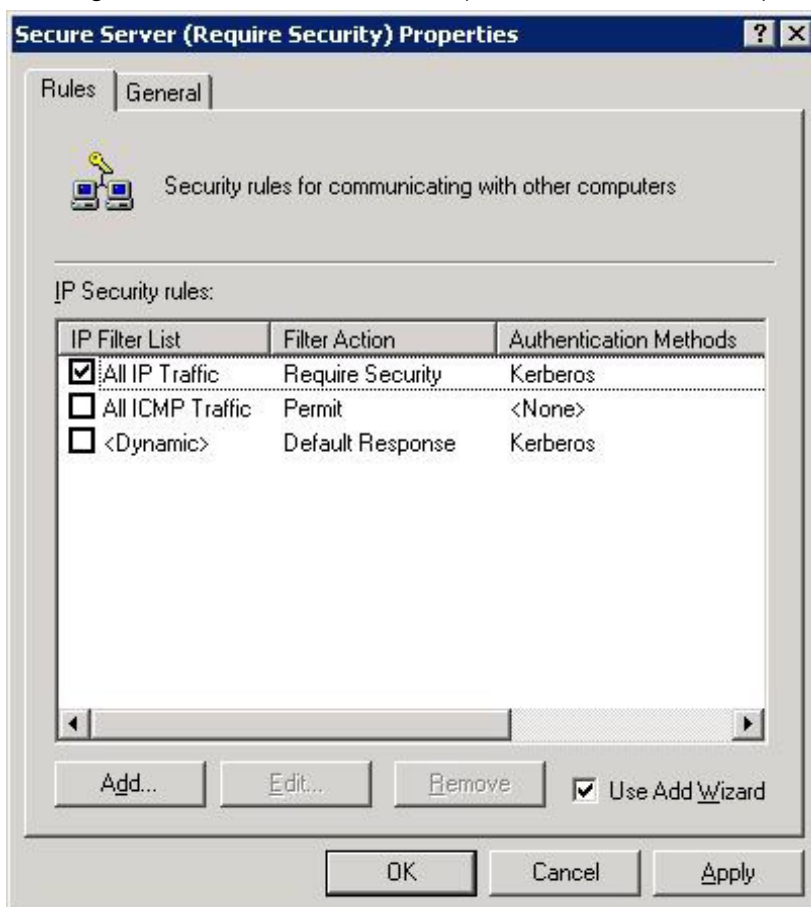
What are two possible ways to achieve this goal? (Each correct answer presents a complete solution.Choose two.)

- A.Monitor the events in the application log on Server1.
- B.Monitor the events in the security log on Server1.
- C.Monitor the Web server connections on Server1 by using a performance log.
- D.Monitor network traffic to Server1 by using Network Monitor.
- E.Monitor the IIS logs on Server1.

Answer: ED

4.You are the administrator of an Active Directory domain.All servers run Windows Server 2003. All client computers run Windows XP Professional.All computers are members of the domain.

The Secure Server (Require Security) IPSec policy is assigned to a file server named Server6. The policy is configured as shown in the exhibit.(Click the Exhibit button.)



Users report that they cannot access shared folders on Server6. Users were able to access shared

folders on

Server6 prior to the implementation of the IPSec policy.

You need to ensure that all client computers in the domain can access the shared folders on Server6. You must ensure that all communications between client computers and Server6 be encrypted.

What should you do?

A.On Server6, enable the All ICMP Traffic IP Security rule in the properties of the Secure Server (Require Security) IPSec policy.

B.On Server6, enable the <Dynamic> IP Security rule in the properties of the Secure Server (Require Security) IPSec policy.

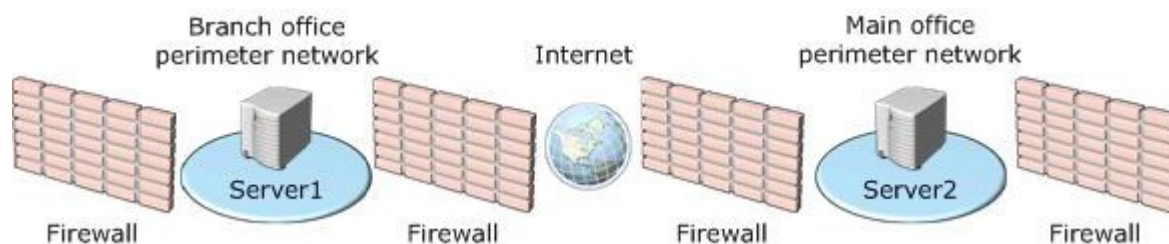
C.On all client computers, assign the Client (Respond Only) IPSec policy.

D.On all client computers, install an IPSec communication certificate in the local machine store.

Answer: C

5.You are a network administrator for your company.The network consists of a single Active Directory domain.All servers run Windows Server 2003.

The company has a main office and one branch office.The perimeter networks for each office are configured as shown in the exhibit.(Click the Exhibit button.)



You configure an L2TP/IPSec VPN tunnel between Server1 and Server2. You also configure and assign an IPSec

policy named RASIPSec that requires secure communications.

You need to ensure that no unsecured traffic from the Internet reaches the internal network through this VPN.You

also need to ensure that access to the VPN servers from their respective internal networks is not disrupted. What should you do?

A.Configure input and output L2TP/IPSec packet filters on the internal interfaces of Server1 and Server2.

B.Configure input and output L2TP/IPSec packet filters on the external interfaces of Server1 and Server2.

C.In the properties of RASIPSec, edit the All IP Traffic IP Filter list to include the IP addresses for only Server1 and Server2.

D.In the properties of RASIPSec, edit the All ICMP Traffic IP Filter list to include the IP addresses for only Server1 and Server2.

Answer: B

6.You are the administrator of an Active Directory domain.The network contains a Windows Server 2003 domain controller named Server1.

Users report that they experience intermittent delays when they log on to Server1. Administrators report that replication attempts between Server1 and other domain controllers are occasionally delayed.

You need to verify the cause of the intermittent connection delays to Server1. You also need to find out

whether the problem is related to a hardware deficiency on Server1. You need to track these delays over a period of one day.

What should you do first?

- A.Run the netdiag /verbose command to perform a network diagnostic test on Server1.
- B.Run the replmon command to view the Active Directory replication status on Server1.
- C.Use Network Monitor to view the network traffic packet contents between Server1 and all other computers.
- D.Create a System Monitor counter to track the queue lengths on the network adapter on Server1.

Answer: D

7.You are the administrator of a Windows Server 2003 computer named Server1. Server1 has a third-party application installed on it.The third-party application runs as a service that is named Service1. Service1 fails periodically.

You need to configure the recovery options for Service1 to meet the following requirements:

If Service1 runs successfully for a day or more, you need to ensure that only the service is immediately restarted upon failure.

If, after this failure, Service1 does not run successfully for another day, you must ensure the entire server is immediately restarted.

Which three actions should you perform? (Each correct answer presents part of the solution.Choose three.)

- A.Configure the Reset fail count after value for Service1 to 1 day.
- B.Configure the Restart service after value for Service1 to 1,440 minutes.
- C.Configure the response to the first failure to be to restart Service1.
- D.Configure the response to the first failure to be to restart Server1.
- E.Configure the response to the second failure to be to restart Service1.
- F.Configure the response to the second failure to be to restart Server1.

Answer: FCA

8.You are the administrator of a Windows Server 2003 computer named Server1. Server1 is a domain member server that has the DNS service installed.

Server1 is configured with two network interfaces named NIC1 and NIC2. Routing is not enabled between the two network interfaces.NIC1 and NIC2 are configured as shown in the following table.

Network interface	IP address	Subnet mask	Preferred DNS server	Purpose
NIC1	192.168.2.10	255.255.255.0	192.168.2.10	Connect to production network
NIC2	192.168.3.10	255.255.255.0	192.168.3.2	Connect to isolated preproduction network segment

Resources on the preproduction network segment use the same fully qualified domain names (FQDNs) as resources in the production network.The TCP/IP properties on client computers in the preproduction environment are controlled by individual testers.

You need to ensure that the users in the preproduction environment cannot resolve FQDNs from the production network.You want to accomplish this goal by using the DNS console on Server1.

What should you do?

- A.Configure the interfaces properties on Server1 to listen on 192.168.2.10 only.
- B.Configure the forwarders on Server1 to refer requests to 192.168.3.2.

- C.Configure Server1 to disable recursion.
- D.Configure Server1 to disable round robin.

Answer: A

9.You are a network administrator for A.Datum Corporation.The network consists of a single Active Directory domain named adatum.net.

Users regularly browse the internal network and the Internet from their client computers.All Web and e-mail hosting for a separate DNS domain named adatum.com is outsourced to an ISP.All name resolution requests for adatum.com are resolved by the ISP.You have no administrative control over the DNS servers at the ISP.You

cannot list the contents of adatum.com by using the nslookup command on the DNS servers at the ISP.

A Windows Server 2003 computer named Server1 is configured with a primary zone for adatum.net.All root hints have been removed from Server1. All client computers refer to this DNS server for name resolution.

You need to configure DNS resolution to ensure that all client computers can locate and access resources in adatum.net, adatum.com, and the Internet.

What should you do?

- A.Configure a secondary zone for adatum.com on Server1.
- B.Configure a primary zone for adatum.com on Server1.
- C.Configure conditional forwarding for adatum.com with the IP address of the DNS server at the ISP.
- D.Configure simple forwarding with the default settings with the IP address of the DNS server at the ISP.

Answer: D

10.Drag and Drop

You are a network administrator for the Graphic Design Institute.The network contains five Windows Server 2003 computers that also function as DNS servers.The servers are configured as shown in the work area.

The Lagos and Nairobi branches of the school each have five Windows XP Professional client computers.The

Tangier branch has 5,000 Windows XP Professional client computers, and the Cape Town branch has 2,500

Windows XP Professional client computers.

Server1 is located in the school's main office in Cairo.Server1 is the authoritative server for a zone named TestInside.com.No changes are planned for the name server (NS) resource records for TestInside.com.

The DNS servers in the Nairobi and Lagos branches are multiuse servers that are configured with the minimum hardware necessary to run Windows Server 2003. The DNS servers in the Cape Town and Tangier branches are configured as dedicated servers with hardware that is sufficient to sustain multiple DNS zones.

You need to ensure that the following requirements are met:

Each client computer can resolve names on the network as quickly as possible by using a fully qualified domain name (FQDN).

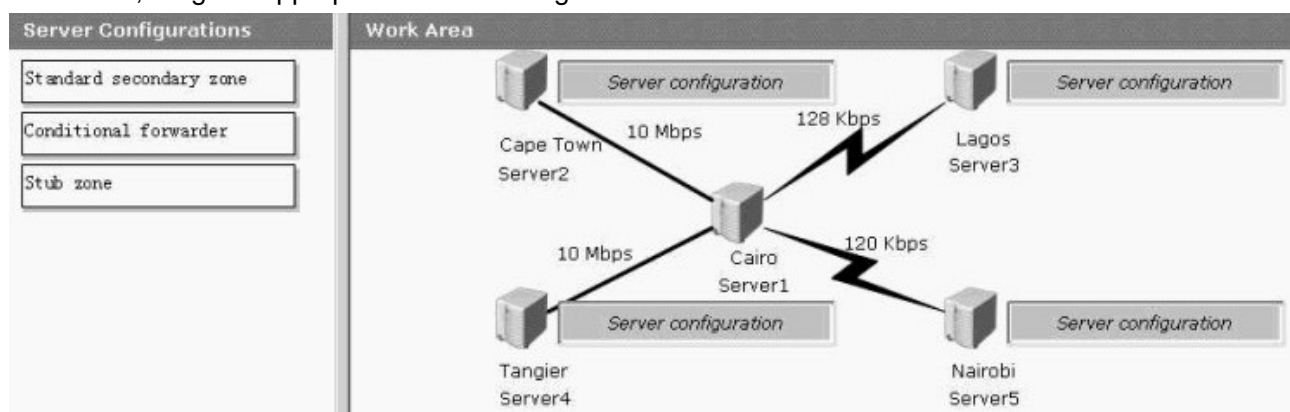
Prevent zone replication traffic from occurring on the slow network connections.

Minimize hard disk utilization on the DNS servers in the Lagos and Nairobi branches as much as possible.

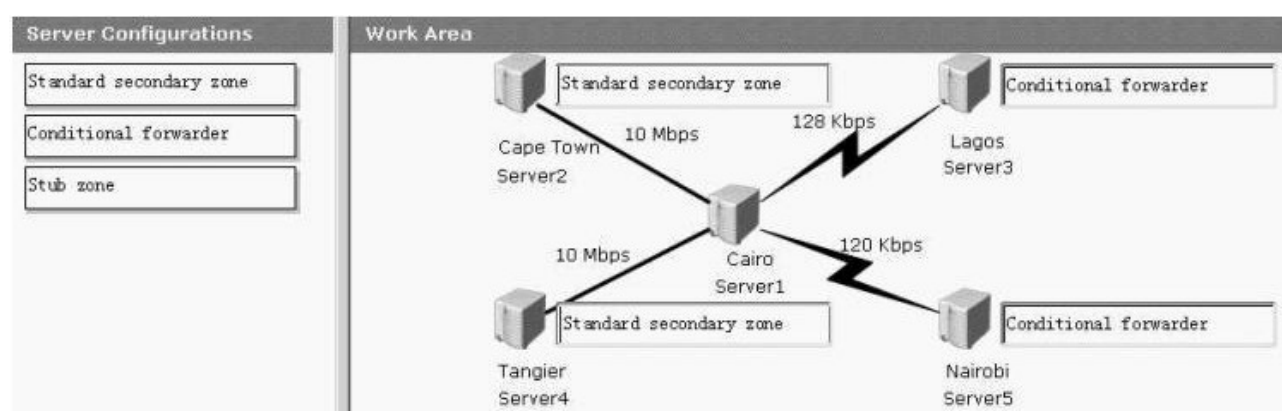
Ensure that DNS queries in Tangier and Cape Town are resolved locally.

How should you configure the remote DNS servers?

To answer, drag the appropriate server configuration to the correct server or servers in the work area.



Answer:



11. Drag and Drop

You are the network administrator for Contoso, Ltd. The network consists of a single Active Directory forest. The

forest contains two domains named contoso.com and corp.contoso.com. The functional level of the forest and the two domains is Windows Server 2003.

The corp.contoso.com zone is configured as an Active Directory-integrated zone. The corp.contoso.com zone is also configured to replicate to all domain controllers in the domain.

The servers are configured as shown in the following table.

Service

DNS service

Work Area

Server	Role	Services and applications installed	Operating system	DNS zones hosted
Server1.corp.contoso.com	Domain controller	DNS, Distributed File System (DFS)	Windows Server 2003	corp.contoso.com
Server2.corp.contoso.com	Application server	WINS, Exchange Server 2003	Windows 2000 Server	None
Server3.contoso.com	DNS server	DNS	UNIX	contoso.com
Server4.corp.contoso.com	Domain controller	DHCP	Windows Server 2003	None
Server5.corp.contoso.com	Certification authority	Certificate Services	Windows Server 2003	None
Server6.contoso.com	Domain controller	None	Windows Server 2003	None

You plan to remove Server1 from the network. You need to install DNS to host the corp.contoso.com zone. Your solution must be fault-tolerant.

On which server or servers should you install DNS?

To answer, drag the DNS service to the correct server or servers in the work area.

Answer:

Service

DNS service

Work Area

Server	Role	Services and applications installed	Operating system	DNS zones hosted
Server1.corp.contoso.com	Domain controller	DNS, Distributed File System (DFS)	Windows Server 2003	corp.contoso.com
Server2.corp.contoso.com	Application server	WINS, Exchange Server 2003	Windows 2000 Server	None
Server3.contoso.com	DNS server	DNS	UNIX	contoso.com
Server4.corp.contoso.com	Domain controller	DHCP	Windows Server 2003	None
Server5.corp.contoso.com	Certification authority	Certificate Services	Windows Server 2003	None
Server6.contoso.com	Domain controller	None	Windows Server 2003	None

12. You are the network administrator for your company. The network consists of a single Active Directory

domain. The functional level of the domain is Windows Server 2003. All client computers in the domain run Windows XP Professional.

An application named Inventory.exe is installed on all computers in the domain to remotely gather software inventory information. The application runs as a service in the security context of the Local System. The startup type of the service is set to Automatic.

In the Default Domain Policy Group Policy object (GPO), the security administrator has configured a software restriction policy that is applied to all computers in the domain. The policy contains a hash rule for the

Inventory.exe application, and the hash rule is configured with a security level of Unrestricted.

The client computers on the network are attacked by a worm that is distributed by e-mail messages received over the Internet. The worm detects the presence of Inventory.exe on a computer, then starts a new instance of the application in the security context of the logged-on user. The worm exploits a bug in the application to cause the computer to fail.

You need to ensure that Inventory.exe cannot be started by the worm, while still allowing the application to run as a service.

What should you do?

A. In the computer settings section of the Default Domain Policy GPO, configure a software restriction policy that contains a zone rule for the Internet zone. Configure the zone rule with a security level of Disallowed.

B. In the user settings section of the Default Domain Policy GPO, configure a software restriction policy that contains a zone rule for the Internet zone. Configure the zone rule with a security level of Disallowed.

C. In the user settings section of the Default Domain Policy GPO, configure a software restriction policy that contains a hash rule for the Inventory.exe application. Configure the hash rule with a security level of Disallowed.

D. In the computer settings section of the Default Domain Policy GPO, modify the existing software restriction policy hash rule for the Inventory.exe application so that the hash rule has a security level of Disallowed.

Answer: D

13. You are the network administrator for your company. The network consists of a single Active Directory domain.

The domain contains an organizational unit (OU) named Webservers. The Webservers OU contains the computer accounts of 12 Windows Server 2003 computers that function as intranet Web servers. A Group Policy object (GPO) named WebserversPolicy is linked to the Webservers OU. The GPO is used to configure various settings on

the computers in the OU. A global group named WebserverAdmins is a member of the Administrators local group on each intranet Web server.

You plan to install a security scanning application on each intranet Web server. The documentation for the application states that it uses a service account, which must be able to modify the

HKEY_LOCAL_MACHINE\SYSTEM key in the registry of every computer on which the application is installed.

You create the service account in the domain. The company's written security policy states that service

accounts must be assigned only the minimum rights and permissions that they require to function.

You need to configure the intranet Web servers so that they comply with the installation requirements of the security scanning application. You also need to comply with the company's security policy. You want to achieve this goal by using the minimum amount of administrative effort.

What should you do?

A. Add the service account to the WebserverAdmins global group.

B. Configure the required permissions as registry security settings in the WebserversPolicy GPO.

C. Run the regedit.exe command to add the required permissions to the registry of each intranet Web server.

D. Run the explorer.exe command to modify NTFS permissions on the
Systemroot\System32\Config\System

file. Assign the service account the Allow - Change permission.

E. Configure file system security settings in the WebserversPolicy GPO to modify NTFS permissions on the

Systemroot\System32\Config\System file. Assign the service account the Allow - Change permission.

Answer: D

14. You are the network administrator for your company. The network contains a Windows Server 2003 computer named Server1.

Three administrators are members of the Administrators local group on Server1. Twelve other administrators are members of the Domain Admins group. The Domain Admins group is also a member of the Administrators local group on Server1.

Someone makes an unauthorized change to the HKEY_LOCAL_MACHINE\SYSTEM key in the registry on

Server1, which causes the computer to fail. You fix the problem.

You need to log all attempts to access the HKEY_LOCAL_MACHINE\SYSTEM key in the registry on Server1.

You decide to enable auditing in the local security policy on Server1.

Which two actions should you perform? (Each correct answer presents part of the solution. Choose two.)

A. Enable auditing in the local security policy on Server1. Select the Audit object access (success and failure) option in the audit policy.

B. Enable auditing in the local security policy on Server1. Select the Audit privilege use (success and failure) option in the audit policy.

C. Enable auditing in the local security policy on Server1. Select the Audit system events (success and failure) option in the audit policy.

D. Configure the SACL on the HKEY_LOCAL_MACHINE\SYSTEM key in the registry. Specify auditing of the Full Control permission for Everyone.

E. Configure the SACL on the HKEY_LOCAL_MACHINE\SYSTEM key in the registry. Specify auditing of the Set Value permission for Everyone.

Answer: D A

15. You are the network administrator for your company. The network consists of a single Active Directory domain. The domain contains 35 Windows Server 2003 computers; 3,000 Windows XP Professional computers; and 2,000 Windows 2000 Professional computers.

Windows Server Update Services (WSUS) is installed on a server named Server1. The necessary Group Policy object (GPO) is configured.

You need to confirm whether all computers in the domain have received all approved updates from Server1.

What should you do on Server1?

- A. Install and configure Urlscan.exe.
- B. At the command prompt, type gpresult /scope COMPUTER.
- C. Open the WSUS console. Run the Status of Computers report.
- D. Open the WSUS console. Run the Synchronization Results report.

Answer: C

16. You are the network administrator for your company. The network consists of a single Active Directory domain. All servers run Windows Server 2003. All client computers run Windows XP Professional.

You need to implement a new software update infrastructure. You discover that security patches, critical updates, and service packs have never been installed on any client computer on the network.

You install Windows Server Update Services (WSUS) on a Windows Server 2003 computer named Server5. You synchronize and approve all of the current security patches, critical updates, and service packs.

You need to ensure that all client computers receive all Microsoft security patches, critical updates, and service packs.

Which two actions should you perform? (Each correct answer presents part of the solution. Choose two.)

- A. Open the WSUS console. Select the option to automatically approve WSUS updates.
- B. Install the Automatic Updates client on all client computers.
- C. Modify the Microsoft Update settings of the Default Domain Controller organizational unit (OU) Group Policy object (GPO) to point client computers to http://server5.
- D. Modify the Microsoft Update settings of the Default Domain Policy Group Policy object (GPO) to point client computers to http://server5.
- E. Open the WSUS console. Create a target group and assign all client computers to the group.

Answer: B D

17. You are the network administrator for your company. The network consists of a single Active Directory domain. All servers run Windows Server 2003. All client computers run Windows XP Professional.

You install Windows Server Update Services (WSUS) on a network server named Server1. When you attempt to synchronize Server1 with the Windows Update servers, you receive an error message. You open Internet Explorer and verify that you can communicate with an external Web site by using the proxy server.

You need to ensure that Server1 can communicate with the Windows Update servers.

What should you do on Server1?

- A. Restart the IIS administration tool.
- B. Configure the Internet Explorer settings to bypass the proxy server.
- C. In the WSUS options, configure authentication to the proxy server.
- D. Install the ISA Firewall Client.

Answer: C

18.Active Screen

You are the network administrator for your company.The network consists of a single Active Directory domain.The relevant portion of the network is shown in the exhibit.(Click the Exhibit button.)

You need to configure a server named Server1 to use a valid static IP configuration.You need to enable Server1 to

communicate with all hosts on the network and on the Internet.You want Server1 to query the DNS server on the local subnet for name resolution.You also want to configure redundancy for name resolution.

What should you do?

To answer, configure the correct options in the dialog box.Drag the appropriate IP address or addresses and the appropriate subnet mask or masks to the appropriate location or locations in the dialog box.

The network diagram shows a topology with three servers at the top: DHCP server (192.168.0.110), DNS server (192.168.0.2), and Server2 (192.168.0.90). Below them is an Ethernet network. Server1 is connected to this network. A Router is connected to the Ethernet network and another Ethernet network below it. The Router has IP addresses 192.168.0.1 on the top interface and 192.168.5.1 on the bottom interface. The bottom Ethernet network contains a DNS server (192.168.5.2). To the right of the diagram are two lists: 'IP Addresses' containing 192.168.0.100, 192.168.0.110, 192.168.0.1, 192.168.0.2, 192.168.5.2, 192.168.5.100, and 192.168.10.2; and 'Subnet Masks' containing 255.255.255.0, 255.255.0.0, and 255.255.240.0. On the right is the 'IP Configuration Dialog Box' for 'Internet Protocol (TCP/IP) Properties'. The 'General' tab is selected. The 'Obtain an IP address automatically' radio button is selected. The 'Obtain DNS server address automatically' radio button is selected. The 'Advanced...' button is visible at the bottom right.

Answer:

The network diagram and IP Configuration dialog box are identical to the previous image. The 'IP Configuration Dialog Box' shows the 'General' tab with the 'Obtain an IP address automatically' radio button selected. The 'Obtain DNS server address automatically' radio button is also selected. The 'Advanced...' button is visible at the bottom right.

19.You are the network administrator for your company.The network consists of a single subnet.A Windows

Server 2003 computer named Server1 functions as a DHCP server.

Server1 leases IP addresses in the 10.1.1.0/24 range to desktop client computers.There are 12 client reservations for other servers and network printers.You have configured several detailed scope and server options. If Server1 fails, you want to have a contingency plan that will allow you to use a domain

controller named DC2 as a DHCP server as quickly as possible. You install DHCP on DC2 without any configuration and stop the DHCP Server service.

You want to list the tasks that are required to back up Server1 and the tasks that are required to restore the backup to DC2. A backup age of 24 hours or less is acceptable.

If Server1 fails, which set of tasks is required to enable DC2 to replace Server1 as the DHCP server?

A. On Server1: Schedule the Backup utility to back up the System State data to tape every 24 hours.

On DC2: Perform a non-authoritative System State restore. Using the Services console, start the DHCP Server

service. Authorize DHCP. Reconcile the database.

B. On Server1: Use the Backup utility to schedule a tape backup of the DHCP database every 24 hours.

On DC2: Restore the tape backup of the DHCP database to a folder. Using the DHCP console, restore the backup from the same folder. From the command prompt, type `net start dhcpserver`. Authorize DHCP.

C. On Server1: Schedule the Backup utility to back up the System State data to tape every 24 hours.

On DC2: Perform an authoritative System State restore. Manually re-create the server and scope options that were on Server1. From a command prompt, type `net start dhcpserver`. Authorize DHCP.

D. On Server1: Use the DHCP console to perform a DHCP backup every 24 hours. Copy the backup on a network share that is accessible by DC2.

On DC2: Copy the backup to a local folder. Using the DHCP console, restore the backup from the local folder. From a command line, type `net start dhcp`. Authorize DHCP. Re-create the 12 client reservations.

Answer: B

20. You are a network administrator for Alpine Ski House. The network consists of a single Active Directory domain named `alpineskihouse.com`.

Your company acquires a company named Adventure Works. The Adventure Works network consists of a single

Active Directory domain named `adventure-works.com`.

A server named Server32 is a network-management application server in the `adventure-works.com` domain. Server32 accesses all of the desktop client computers to perform automated software upgrades and hardware inventory. The network-management software on Server32 references desktop computers by unqualified

host names, which are resolved to `clientname.adventure-works.com` by using a DNS server.

You join Server32 to your domain to become `server32.alpineskihouse.com`. The Server32 IP address is 10.10.10.90.

You are gradually migrating all `adventure-works.com` desktop client computers to your domain to become `clientname.alpineskihouse.com`. You do not have access to the `adventure-works.com` DNS server. When Server32 attempts to apply an update to the client computers, the network-management software returns many alerts that say that desktop computers cannot be found.

You want to allow the network-management software on Server32 to resolve unqualified client computer host

names in `adventure-works.com` or `alpineskihouse.com`, and you want to use the minimum amount of administrative effort.

What should you do?

A. On the DNS server for `alpineskihouse.com`, add a zone for `adventure-works.com`. Create a host (A)

record for server32.adventure-works.com that points to 10.10.10.90.

B.On Server32, in System Properties, type adventure-works.com in the Primary DNS suffix of this computer field in the DNS Suffix and Netbios Computer Name setting.

C.On Server32, configure a Hosts file that contains the name and IP address of every network computer.

D.On Server32, in Advanced TCP/IP Settings, add adventure-works.com and alpineskihouse.com to the Append these DNS suffixes (in order) setting.

Answer: D